

The Alabama Climate Report

Brought to you by the Office of the Alabama Climatologist

Volume 5, Number 5, February-March 2015



Dr. John Christy, Alabama State Climatologist

The tardy timing of this month's report is proof that even the state climatologist and his staff aren't immune to the whims and limitations of the weather. And three significant winter weather events in a three week span — in Alabama — are enough to upset any schedule.

So, at the tag end of what had been a relatively normal Alabama winter, we get three events that bring north Alabama the trifecta of winter weather: snow, sleet and freezing rain back-to-back-to-back. It might not be unprecedented, but none of the lifetime locals on staff can recall so many frozen precipitation events over such a short span of time.

Some stations saw their heaviest total snowfall for a February, with unofficial reports of more than a foot of snow in Blount County and on Sand Mountain. Other official tallies for the month included:

Valley Head, 9.5 inches
Decatur, 9.0 inches
Huntsville, 8.8 inches
Muscle Shoals, 3.5 inches
Birmingham, 0.7 inches

And even places that didn't see snow or ice saw temperatures that were significantly cooler than usual in February:

Decatur, -9.6°
Muscle Shoals, -8.9°
Huntsville, -8.4°
Birmingham, -8.3°
Anniston, -7.1°
Tuscaloosa, -6.8°
Calera, -6.7°
Mobile, -6.4°
Montgomery, -5.8°
Dothan, -5.5°
Troy, -4.5°

And while we are finally warming into March, this is a reminder that we should be especially weather prepared and weather aware during this time of the year. Strong storms and violent weather are especially common during the spring, so we should all make the appropriate preparations.

- John Christy

U.S. Drought Monitor
Alabama



March 3, 2015
(Released Thursday, Mar. 5, 2015)
Valid 7 a.m. EST

Drought Conditions (Percent Area)

	None	D0-D4	D1-D4	D2-D4	D3-D4	D4
Current	44.30	55.61	14.67	0.00	0.00	0.00
Last Week 20/03/2015	29.07	70.93	17.22	0.00	0.00	0.00
3 Months Ago 12/02/2015	30.15	63.85	14.70	3.39	0.00	0.00
Start of Calendar Year 12/01/2015	62.49	37.51	3.77	0.00	0.00	0.00
Start of Water Year 02/01/2015	17.21	82.79	20.99	1.25	0.00	0.00
One Year Ago 03/03/2014	01.38	8.64	0.00	0.00	0.00	0.00

Intensity:



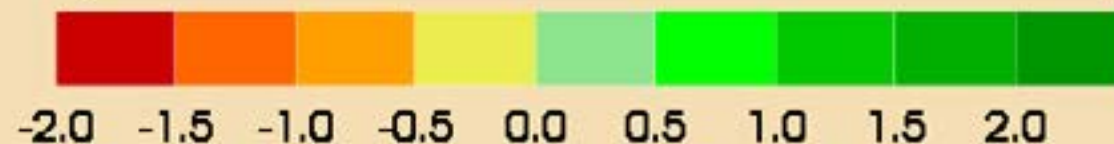
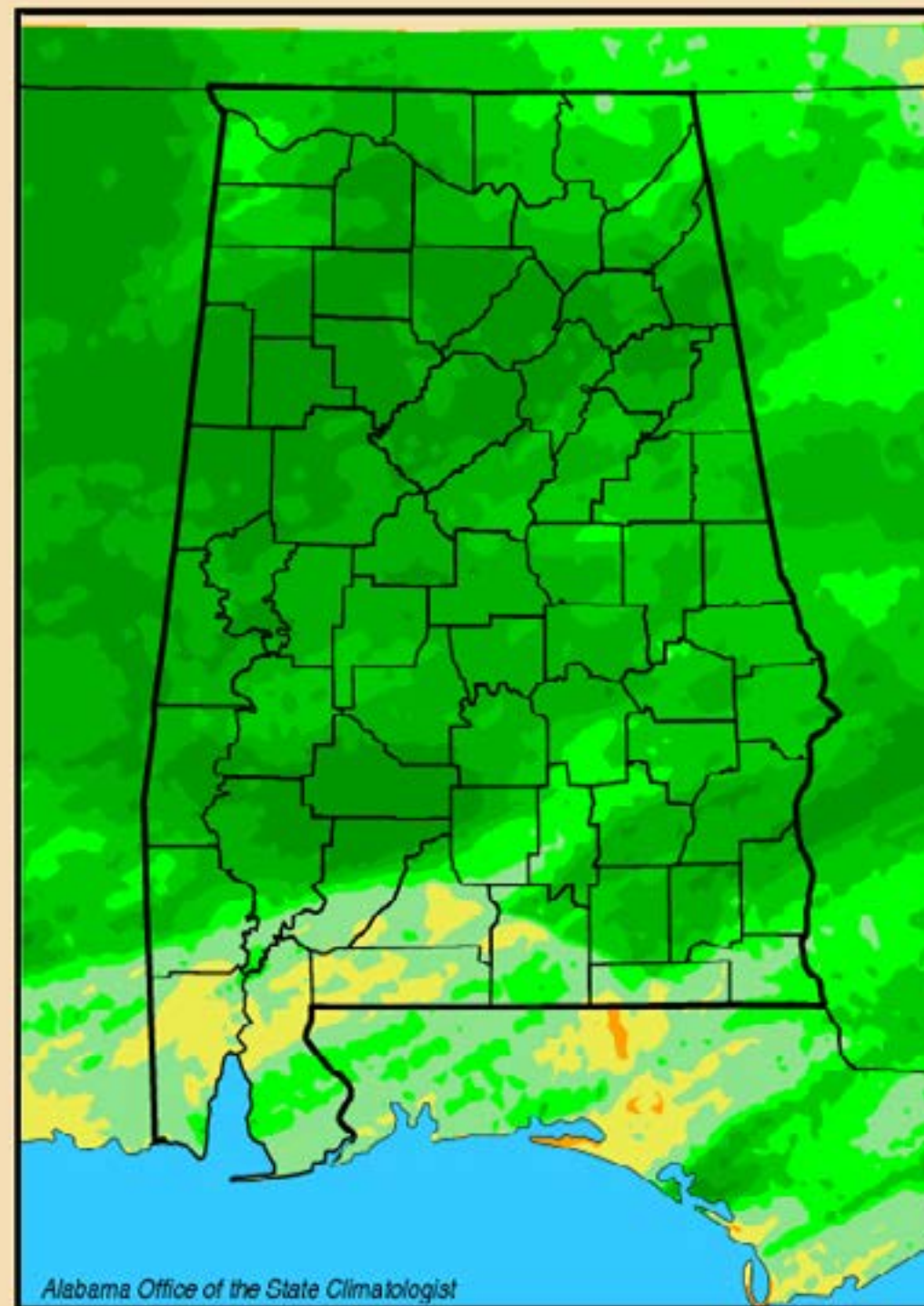
The Drought Monitor focuses on broad-scale conditions. Local conditions may vary. See accompanying text summary for forecast statements.

Author:
David Simeral
Western Regional Climate Center



<http://droughtmonitor.unl.edu/>

Lawn-and-Garden Moisture Index
for March 3, 2015



Alabama Office of the State Climatologist

Alabama Monthly Climate Summaries
Feb. 2014

Station	Station Began	Feb. Mean Feb. Norm	Feb. Hi Temp Record Hi	Feb. Low Temp Record Low	Total Precip. Normal Prec.	Wettest Feb. Driest Feb.	Heaviest Day Record Day
Anniston	2/1903	40.1°	88° 2/8/15	15° 2/19/15	2.66"	8.99" 1990	1.06" 2/25/15
		47.3°	84°+ 2/23/96	4° 2/17/58	4.80"	1.19" 1978	3.40" 2/2/82
Auburn	1/1893	42.1°	86° 2/9/15	18° 2/20/15	4.42"	17.61" 1961	1.24" 2/1/15
		49.9°	82° 2/14/82	7° 2/3/17	5.27"	1.50" 1943	7.83" 2/25/61
Birmingham	1/1930	39.4°	89° 2/8/15	13° 2/19/15	4.32"	9.28" 1971	1.45" 2/16/15
		46.8°	83°+ 2/23/96	3° 2/17/58	4.21"	1.31" 1978	5.46" 2/21/61
Brewton	4/1977	45.9°	78.6° 2/22/15	22.2° 2/20/15	2.68"	12.19" 1982	1.27" 2/25/15
		51.0°	87° 2/13/82	11°+ 2/4/70	5.67"	1.45" 1980	8.18" 2/11/81
Calera	9/1900	41.8°	70° 2/8/15	19° 2/19/15	4.55"	15.62" 1961	0.76" 2/22/15
		46.5°	85° 2/13/82	4° 2/10/79	5.32"	0.61" 1968	5.55" 2/3/36
Clanton	2/1893	40.7°	88.6° 2/8/15	18.7° 2/19/15	4.56"	8.99" 1990	1.06" 2/16/15
		46.6°	84° 2/14/82	5° 2/5/96	5.48"	2.27" 2000	4.87" 2/4/36
Courtland		34.8°	65.1° 2/7/15	8.8° 2/19/15	4.10"	M	1.42" 2/21/15
		M	M	M	M	M	M
Cullman	7/1907	35.3°	65.0° 2/8/15	9.6° 2/19/15	3.68"	M	1.57" 2/16/15
		M	M	M	M	M	M
Decatur	2/1880	34.8°	65° 2/8/15	9° 2/19/15	3.99"	12.16" 1939	1.14" 2/21/15
		44.2°	83° 2/14/82	-12° 2/13/1899	4.86"	0.79" 1968	3.86" 2/1/51
Dothan	2/1902	47.5°	77° 2/22/15	23° 2/20/15	3.72"	10.36" 1939	1.54" 2/25/15
		53.5°	84° 2/25/44	12° 2/3/51	4.80"	0.93" 1951	4.26" 2/9/37
Fairhope	8/1917	47.8°	75.3° 2/22/15	24.5° 2/20/15	2.91"	11.61" 1983	1.72" 2/25/15
		53.1°	87° 2/19/82	3° 2/3/51	5.47"	0.82" 1999	8.61" 2/11/81
Gadsden	7/1893	34.8°	64.4° 2/8/15	7.5° 2/19/15	3.90"	10.12" 1990	1.80" 2/16/15
		44.1°	82° 2/13/82	1° 2/1/66	4.91"	0.71" 1978	4.75" 2/21/61
Gainesville Lock	6/1948	41.2°	71.4° 2/8/15	20.0° 2/19/15	3.99"	11.00" 1983	0.92" 2/16/15
		47.2°	87° 2/14/82	9°+ 2/6/96	4.99"	1.55" 2000	5.36" 2/16/90
Greensboro	2/1890	41.8°	70.8° 2/8/15	17.9° 2/19/15	4.52"	12.72" 1990	1.24" 2/16/15
		50.0°	87° 2/13/82	7° 2/4/96	5.37"	1.64" 2000	5.18" 2/21/61
Highland Home	3/1892	43.8°	88.9° 2/8/15	19.3° 2/20/15	3.43"	10.78" 1975	1.26" 2/25/15
		49.4°	86° 2/19/56	7°+ 2/6/96	5.35"	1.20" 1980	5.33" 2/17/75
Huntsville	1/1959	37.3°	67° 2/8/15	11° 2/19/15	3.77"	10.14" 1994	1.35" 2/16/15
		43.8°	83° 2/23/96	1° 2/4/96	4.70"	0.59" 1978	4.04" 2/10/94

Alabama Monthly Climate Summaries
Feb. 2014

Station	Station Began	Feb. Mean Feb. Norm	Feb. Hi Temp Record Hi	Feb. Low Temp Record Lo	Total Precip. Normal Prec.	Wettest Feb. Driest Feb.	Heaviest Day Record Day
Mobile	3/1900	47.4°	78° 2/22/15	25° 2/19/15	2.16"	11.89" 1983	0.77" 2/25/15
		53.5°	84° 2/13/82	11°+ 2/5/96	5.10"	1.09" 1999	5.37" 2/10/81
Montgomery	6/1948	44.7°	73° 2/8/15	20° 2/20/15	4.84"	9.87" 1982	1.28" 2/25/15
		50.5°	85° 2/13/82	10°+ 2/5/96	5.45"	1.11" 1999	5.54" 2/24/61
Muscle Shoals	12/1940	36.3°	67° 2/7/15	11° 2/19/15	3.11"	10.74" 1991	1.17" 2/21/15
		44.6°	83° 2/13/82	-2° 2/18/58	4.46"	0.51" 1978	5.03" 2/12/48
Russellville	9/1953	34.9°	65.1° 2/8/15	7.3° 2/19/15	3.55"	11.28" 1989	1.72" 2/21/15
		42.5°	84° 2/24/96	-12°+ 2/19/58	4.81"	0.96" 1972	6.75" 2/19/91
Scottsboro	10/1891	32.1°	59.3° 2/11/15	8.1° 2/19/15	3.35"	9.60" 1990	1.69" 2/16/15
		43.0°	82° 2/15/89	-8° 2/1/66	5.22"	0.77" 1978	4.10" 2/16/95
Selma	1/1895	42.8°	72.0° 2/8/15	19.2° 2/20/15	4.43"	9.97" 1982	1.52" 2/22/15
		50.5°	85° 2/27/82	9° 2/3/51	4.87"	1.54" 2000	5.31" 2/3/82
Talladega	2/1888	38.8°	68.1° 2/8/15	14.7° 2/19/15	3.50"	10.37" 1983	1.01" 2/16/15
		44.9°	84°+ 2/26/77	2° 2/18/58	5.11"	1.20" 1978	4.51" 2/21/61
Thomasville	9/1891	43.1°	71.2° 2/9/15	21° 2/20/15	4.27"	14.37" 1929	1.31" 2/22/15
		49.9°	86° 2/10/32	-5° 2/13/1899	5.25"	1.27" 2000	7.15" 2/11/1897
Troy	6/1908	45.4°	74° 2/22/15	18° 2/20/15	3.69"	10.87" 1975	1.44" 2/25/15
		50.3°	85°+ 2/17/01	10°+ 2/6/96	4.83"	0.93" 2000	5.60" 1/11/81
Tuscaloosa	6/1948	41.9°	71° 2/8/15	19° 2/19/15	4.58"	12.70" 1983	1.16" 2/21/15
		49.8°	86° 2/13/82	5° 2/2/51	5.07"	1.73" 1978	5.44" 1/21/61
Valley Head	1/1893	33.5°	63.6° 2/8/15	6° 2/19/15	3.98"	14.73" 1990	1.52" 2/16/15
		40.6°	80° 2/14/82	-12°+ 1/19/58	5.62"	0.74" 1978	7.39" 2/16/90
Statewide Feb. 2015		40.78°	78° Mobile	6° Valley Head	3.80"	17.61" Auburn	1.72" 2 stations
Feb. Norm		47.74°	87° 4 stations	-12° 3 stations	5.08"	0.51" M. Shoals	8.61" Fairhope

M: Data is missing or not available

*New Record

#This data is missing this month due to an instrument malfunction

^ This record differs from long-term data in the AOSC climate database:

http://nsstc.uah.edu/alclimate/climate/daily_climate_and_normals.php

Community Collaborative Rain, Hail & Snow Network (CoCoRAHS)

February 2015

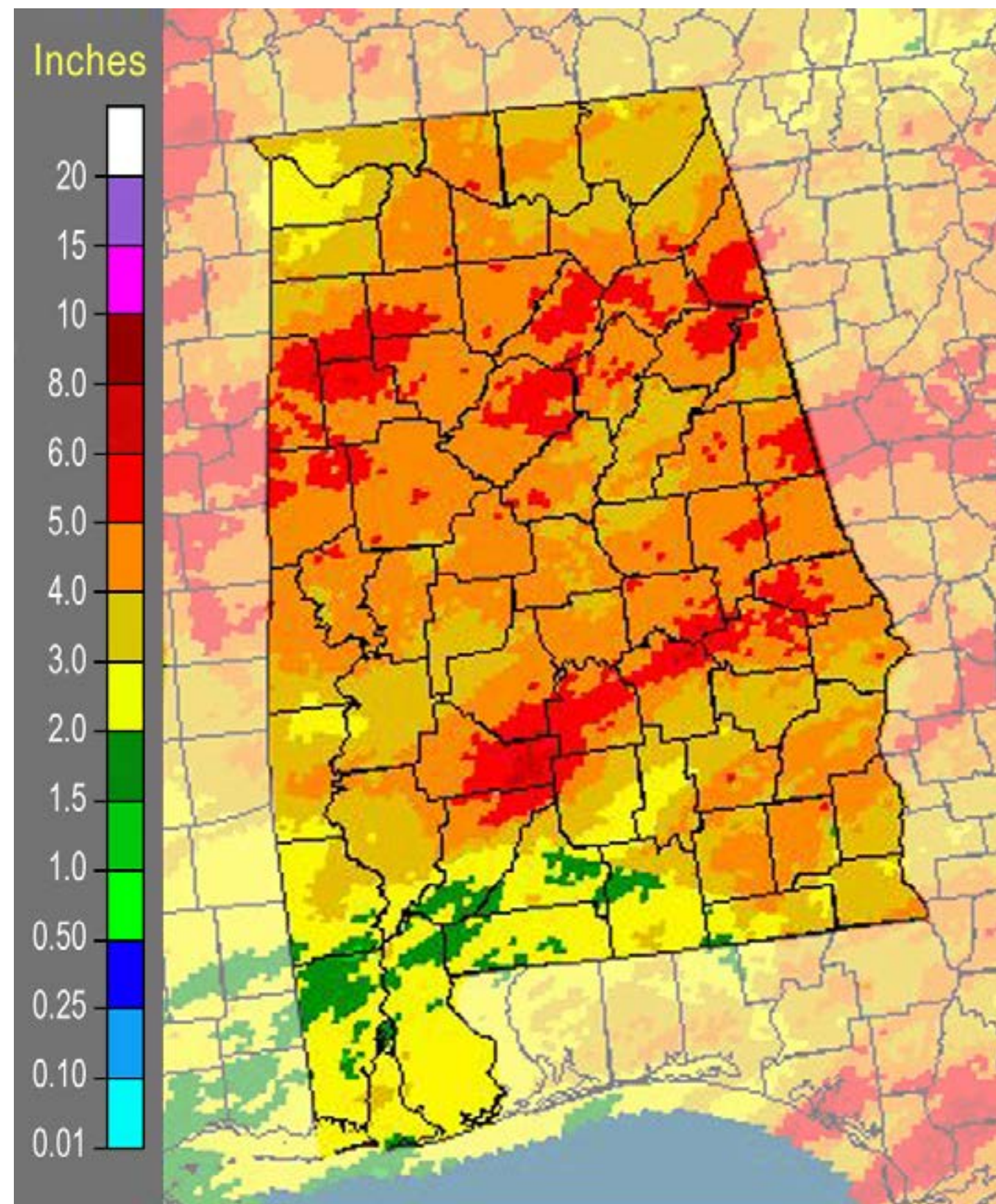
	Ave. Total Precip.	# Stations
Autauga	4.47	2
Baldwin	3.09	21
Barbour	n.a.	0
Bibb	3.59	1
Blount	3.74	10
Bullock	n.a.	0
Butler	n.a.	0
Calhoun	4.23	3
Chambers	n.a.	0
Cherokee	3.03	1
Chilton	1.10	2
Choctaw	3.44	1
Clarke	4.09	3
Clay	n.a.	0
Cleburne	n.a.	0
Coffee	4.48	1
Colbert	2.80	8
Conecuh	n.a.	0
Coosa	7.81	2
Covington	n.a.	0
Crenshaw	n.a.	0
Cullman	3.82	4
Dale	4.81	2
Dallas	3.82	1
DeKalb	3.64	3
Elmore	4.63	7
Escambia	2.41	1
Etowah	3.52	1
Fayette	11.54	1
Franklin	n.a.	0
Geneva	n.a.	0
Greene	n.a.	0
Hale	n.a.	0
Henry	n.a.	0

	Ave. Total Precip.	# Stations
Houston	2.84	1
Jackson	3.53	7
Jefferson	4.51	13
Lamar	n.a.	0
Lauderdale	2.78	9
Lawrence	3.91	2
Lee	4.22	4
Limestone	3.50	10
Lowndes	n.a.	0
Macon	n.a.	0
Madison	4.18	51
Marengo	n.a.	0
Marion	4.35	2
Marshall	3.14	11
Mobile	2.36	12
Monroe	2.09	2
Montgomery	4.60	4
Morgan	3.59	6
Perry	n.a.	0
Pickens	4.65	1
Pike	n.a.	0
Randolph	5.59	1
Russell	4.28	2
St. Clair	4.50	2
Shelby	4.21	21
Sumter	n.a.	0
Talladega	4.07	6
Tallapoosa	5.28	4
Tuscaloosa	4.96	4
Walker	n.a.	0
Washington	4.37	1
Wilcox	4.94	2
Winston	3.71	2

Normal February Precipitation*

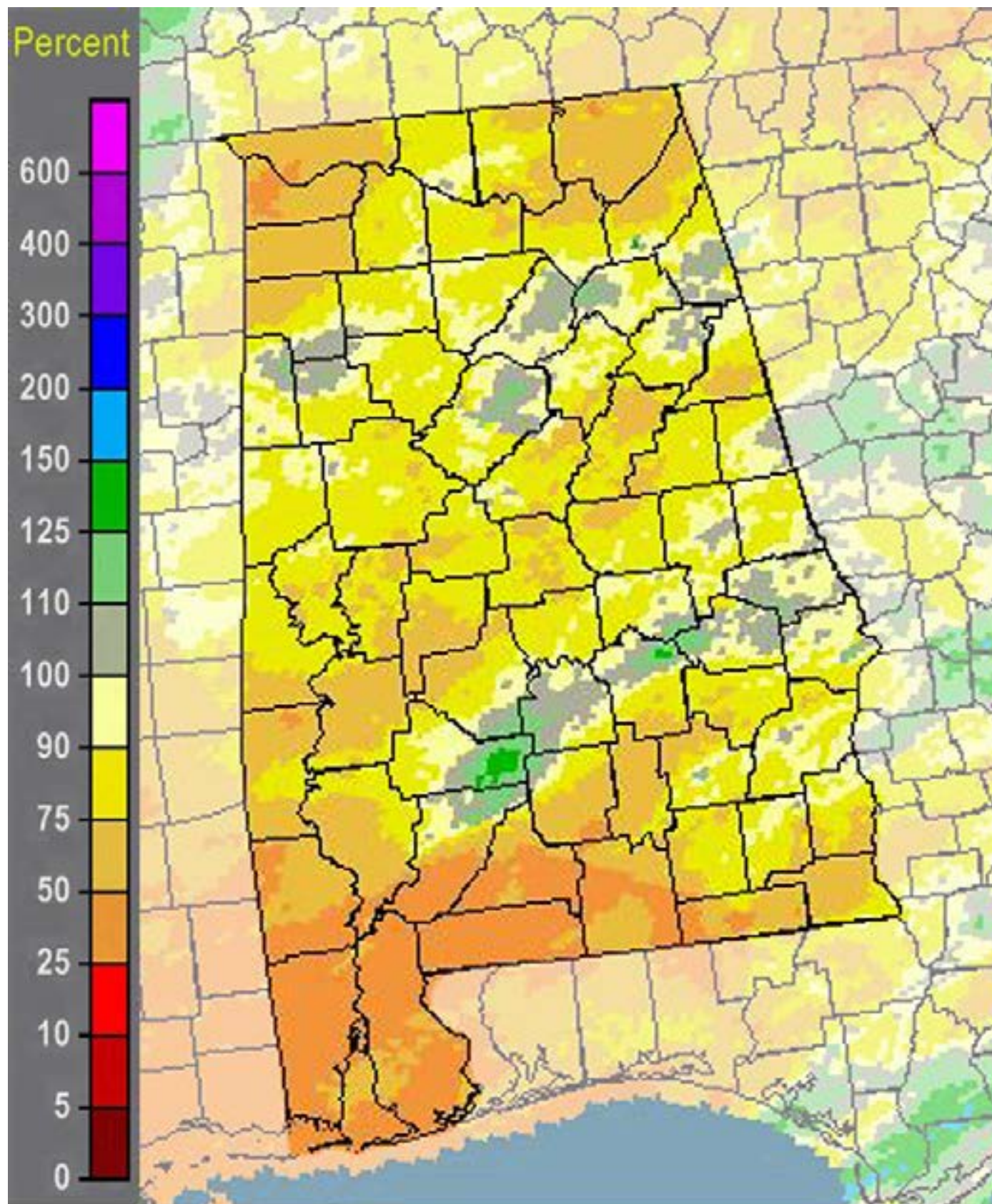
Abbeville	5.12"
Alberta	5.06"
Alex City	5.12"
Aliceville	5.18"
Andalusia	5.09"
Ashland	5.63"
Athens	5.51"
Bay Minette	5.18"
Bessemer	4.85"
Billingsley	5.24"
Centreville WSMO	5.42"
Chatom	5.66"
Claiborne L&D	4.95"
Clayton	4.73"
Dauphin Isl.	5.37"
Elba	5.19"
Eufaula WR	4.36"
Evergreen	5.57"
Fayette	5.75"
Geneva 2	5.32"
Greenville	5.32"
Haleyville	5.36"
Hamilton 3S	5.77"
Heflin	5.62"
Hurtsboro	4.52"
Jasper	5.18"
Lafayette	5.55"
Livingston	5.07"
Melvin	5.20"
Milstead	5.14"
Moulton	4.71"
Oneonta	5.23"
Perryville	4.97"
Plantersville	5.34"
Rock Mills	5.24"
Rockford	5.64"
Sylacauga	5.15"
Union Springs	5.19"
Uniontown	4.88"
Vernon	5.40"
Warrior L&D	5.16"
Wetumpka	5.30"

*Southeast Regional Climate Center
www.serrc.com



(NOAA) water.weather.gov

February 2015 NWS multi-sensor precipitation estimate



(NOAA) water.weather.gov

February 2015 NWS percentage of normal precipitation

Choctawhatchee, Pea and Yellow Rivers Watershed Management Authority
Flood Warning System Rain and River Level Gauges

County	Gauge	Location & Water Body	Jan 2014 2013	Feb 2014 2013	March 2014 2013	April 2014 2013	May 2014 2013	June 2014 2013	July 2014 2013	Aug 2014 2013	Sept 2014 2013	Oct 2014 2013	Nov 2014 2013	Dec 2014 2013	YTD 2014 2013
Barbour	Star Hill	Al Hwy. 239 S	2.64	5.20	4.84	10.60	3.52	4.20	4.72	2.92	0.52	3.32	2.64	4.32	49.44
	Star Hill		3.28	11.04	5.16	3.72	1.88	5.00	12.44	5.76	1.52	1.00	2.20	7.88	60.88
	Texasville	East Fork	3.40	5.00	4.40	14.80	3.08	2.88	2.92	2.12	1.52	4.64	2.04	5.52	52.32
	Texasville	Choctawhatchee	2.00	9.28	2.60	4.40	0.96	7.48	19.56	5.96	2.80	0.28	2.28	7.80	65.40
Coffee	Big Creek	Big Creek	3.24	5.60	4.48	13.68	5.44	4.64	3.76	4.36	2.60	4.16	2.20	5.76	59.92
	Big Creek	Hwy. 87 North	2.84	9.92	2.88	4.04	1.40	7.72	12.52	6.00	2.56	0.76	2.64	6.84	60.12
	Elba	Pea River	2.92	5.20	4.16	13.24	4.84	3.16	2.52	3.68	4.72	5.56	1.88	5.28	57.16
	Elba	Hwy. 84 East	2.64	12.08	2.56	4.24	1.16	6.24	12.72	6.60	4.84	0.32	2.36	6.68	62.44
	Enterprise	137 Lester Dr.	3.24	5.48	6.60	16.52	3.76	3.36	3.56	2.60	3.64	4.32	2.08	4.08	59.24
	Enterprise		2.08	13.08	2.16	3.92	1.28	5.04	17.12	8.52	3.64	0.52	2.92	7.56	67.84
	Folsom Bridge	Pea River	3.08	5.48	4.32	15.16	6.76	3.24	2.44	3.68	2.12	3.96	2.20	6.64	59.08
	Folsom Bridge	Hwy. 167 North	3.00	12.08	2.72	5.48	1.32	8.52	11.32	7.84	3.16	0.36	2.20	8.64	66.64
	Lowry Mill	Whitewater	3.16	6.04	4.28	13.84	4.36	6.60	3.80	3.56	4.40	3.84	2.32	4.96	61.16
	Lowry Mill	Creek	2.72	9.20	3.08	3.92	1.00	5.36	12.52	6.24	2.84	0.96	2.52	6.32	56.68
Covington	New Brockton	Farm Center	3.00	4.96	5.16	16.20	4.72	2.88	3.68	3.12	4.92	3.92	2.48	6.56	61.60
	New Brockton	Hwy. 84	2.12	11.92	1.84	4.16	1.24	6.00	11.32	9.48	3.56	1.04	1.92	7.04	61.64
	Yellow River	Yellow River	3.16	5.16	7.04	15.88	4.60	4.32	3.68	2.64	4.92	3.20	1.44	5.36	61.40
Dale	Yellow River	Hwy. 55	3.52	12.28	2.12	3.76	2.00	9.28	8.88	7.40	6.04	1.32	2.16	6.36	65.12
	Yellow River*	Yellow River													
Dale	Arlton	Pea River	3.36	5.48	4.12	14.00	2.88	4.80	2.96	2.36	3.16	4.08	2.44	5.08	54.72
	Arlton	US Hwy. 231 North	2.72	8.92	3.08	4.72	3.00	11.68	12.60	7.20	2.08	0.80	2.24	8.72	67.76
	Daleville	Claybank Creek	2.60	6.00	6.44	16.08	2.52	3.68	4.60	4.52	4.48	4.20	2.72	5.04	62.88
	Daleville	Hwy. 84 West	1.72	14.48	2.48	5.16	1.36	4.16	19.08	9.08	3.80	1.20	2.36	8.44	73.32
	Newton	Choctawhatchee	2.44	5.32	5.48	14.16	5.76	3.12	4.52	2.32	2.04	4.28	2.32	5.36	57.12
	Newton	River, Hwy. 123 N	2.68	13.80	1.92	5.64	1.20	4.56	20.44	10.60	3.80	0.64	1.84	6.88	74.00
	Ozark	Little Claybank Cr.	2.84	5.48	4.56	15.04	3.92	1.56	3.56	2.76	3.52	4.08	2.16	4.60	54.08
	Ozark	US Hwy. 231	1.36	13.20	2.96	4.08	2.52	7.72	17.88	5.48	4.32	0.72	1.92	6.24	68.40
	Skipperville	West Fork	2.80	5.68	4.44	12.28	3.28	3.80	2.84	1.56	5.80	4.64	3.32	5.36	55.80
	Skipperville	Choctawhatchee	2.52	12.96	3.16	4.36	0.76	10.20	17.32	6.52	3.20	0.32	1.80	7.60	70.72

Choctawhatchee, Pea and Yellow Rivers Watershed Management Authority
Flood Warning System Rain and River Level Gauges

County	Gauge	Location & Water Body	Jan 2014 2013	Feb 2014 2013	March 2014 2013	April 2014 2013	May 2014 2013	June 2014 2013	July 2014 2013	Aug 2014 2013	Sept 2014 2013	Oct 2014 2013	Nov 2014 2013	Dec 2014 2013	YTD 2014 2013
Geneva	Geneva	Choctawhatchee	3.68	6.28	7.52	14.16	4.88	3.32	6.24	1.08	2.52	3.92	2.24	7.32	63.16
	Geneva	River, Hwy. 52 E	2.48	21.44	1.72	4.20	1.12	7.80	21.44	9.08	8.48	1.04	2.80	7.88	89.48
	Sellersville	Double Bridges	2.48	5.16	6.52	14.12	5.52	2.92	3.72	1.08	1.88	4.28	2.60	6.00	56.28
Henry	Sellersville	Creek, Cty. Rd. 40	1.96	17.84	1.64	3.84	1.20	7.32	14.56	7.48	5.08	0.60	2.52	6.92	70.96
	East Choctaw	E. Choctawhatchee	2.80	5.24	4.72	12.92	5.40	3.24	4.72	1.24	4.40	5.60	2.56	6.16	59.00
Houston	East Choctaw	Hwy. 27 East	1.92	12.64	2.52	5.80	0.92	6.84	14.32	5.68	2.84	1.36	2.12	7.76	64.72
	Dothan	Little Choctaw	3.24	4.84	5.52	11.36	2.92	2.40	5.52	0.64	1.36	6.32	2.00	5.56	51.68
Pike	Dothan	Brannon Stand Rd.	1.60	19.76	3.16	4.32	1.24	4.28	14.56	12.12	5.52	0.28	4.08	8.68	79.60
	Troy	400 Pell Ave.	2.96	5.04	4.76	9.08	5.32	4.40	3.44	3.00	1.80	3.08	2.04	4.80	49.72
	Troy		1.84	10.72	4.12	2.72	1.20	5.04	14.20	4.96	1.28	1.16	1.76	6.56	55.56
Shiloh	Shiloh	Hwy. 130 West	4.08	4.88	4.32	11.00	2.84	5.72	3.04	2.16	3.32	3.72	2.08	3.68	50.84
	Shiloh		2.80	8.72	3.36	3.60	3.12	4.60	10.80	6.96	2.04	1.36	2.40	7.76	57.52

*New gauge at Yellow River on Hwy. 84 currently being installed.

Choctawhatchee, Pea and Yellow Rivers Watershed Management Authority
400 Pell Avenue, Collegeview Building
Troy, AL 36082
(334) 670-3780
www.cpyrwma.alabama.gov
email: choctaw@troy.edu

Alabama Climate Report Climate Extremes

Hottest - Coldest

Statewide Average Temperature

http://www.sercc.com/climateinfo/monthly_seasonal.html

Record begins in 1895

Alabama Climate Report Climate Extremes

Wettest - Driest

Statewide Average Precipitation

http://www.sercc.com/climateinfo/monthly_seasonal.html

Record begins in 1895

Year-to-date

Hottest	1.	1921	65.7°
	2.	1927	65.6°
	3.	1911	65.3°
	4.	1922	65.2°
	5.	1933	65.1°
		1998	65.1°
	7.	1925	65.0°
	8.	1990	64.9°
		2012	64.9°
	10.	1938	64.5°
	11.	2007	64.4°
	12.	1896	64.3°

January through Dec. 2014

AVG 63.1°
24. 2014 62.2°

		1963	61.7°
11.		1966	61.7°
10.		1895	61.6°
9.		1960	61.5°
		1901	61.4°
		1969	61.4°
6.		1979	61.4°
		1940	61.2°
		1958	61.2°
Coldest	3.	1983	61.2°
	2.	1968	61.0°
	1.	1976	60.7°

Year to Date

Wettest	1.	1929	75.08"
	2.	1975	74.77"
	3.	2009	73.78"
	4.	1983	70.36"
	5.	1961	69.83"
	6.	1979	67.92"
	7.	1948	67.64"
	8.	1973	67.17"
	9.	1912	66.56"
	10.	1964	66.50"
	11.	1919	65.97"
	12.	1900	65.85"

January through Dec. 2014

56. 2014 55.95"
AVG 55.10"

		1941	46.19"
12.		1910	46.19"
11.		1896	46.16"
		1981	45.80"
9.		1930	45.80"
8.		1921	45.44"
7.		1914	45.33"
6.		1968	45.22"
5.		1931	43.84"
4.		2000	42.50"
3.		1904	40.60"
2.		2007	37.87"
Driest	1.	1954	35.39"

Alabama State Climatologist

John R. Christy

Alabama State Climatologist

The University of Alabama

in Huntsville

christy@nsstc.uah.edu

256-961-7763

Contact:

Phillip Gentry

UAHuntsville Communications

The University of Alabama in Huntsville

gentry@nsstc.uah.edu

256.961.7618

Bob Clymer

Assistant State Climatologist

The University of Alabama in Huntsville

bob.clymer@nsstc.uah.edu

256-961-7771

Office of Alabama Climatologist
The University of Alabama in Huntsville
nsstc.uah.edu/aosc/

Office of Alabama Climatologist
The University of Alabama in Huntsville
nsstc.uah.edu/aosc/

<http://nsstc.uah.edu/alclimatereport>