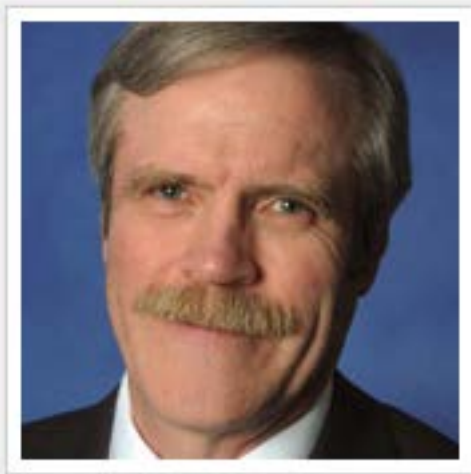


The Alabama Climate Report

Brought to you by the Office of the Alabama Climatologist

Volume 4, Number 3, December, 2013



Dr. John Christy, Alabama State Climatologist

While 2013 proved to be the driest calendar year since records began in the 1800s (in California), several Alabama stations recorded annual rainfall that was substantially heavier than normal. And it seemed that the further east you were, the wetter it was.

Of the state's major cities, Dothan led the way with 77.91 inches of year during 2013. That is 24.04" more than normal. Anniston saw 75.28 inches of rain, a full 25.73 inches more than a normal year. That was the calendar year record rainfall in Anniston, in a climate record that goes back to 1904. It was also the first time Anniston had more than 70 inches of rain in a year. Birmingham got 67.87 inches (14.28 inches above normal).

City	'13 rain	Anomaly
Dothan	77.91"	+24.04"
Anniston	75.28"	+25.73"
Mobile	69.24"	+3.26"
Birmingham	67.87"	+14.28"
Huntsville	58.29"	+4.11"
Montgomery	56.22"	+3.29"

A co-op station in Guntersville, with a record that goes back to 1905, reported 82.27" of rain for 2013.

A CoCoRAHS station just outside of Trussville reported 90.24" of rain for the year, while a station outside of Clayhatchee reported 89.83 inches. Other CoCoRAHS stations reporting more than 85 inches of rain for 2013 included Munford 5.0 SSE (86.84"), Huntsville 5.9 SE (86.39"), and Guntersville 2.2 SW (85.53").

Although the year started with a warm January, 2013 will be remembered for a cool spring — in places, March was colder than January — and for an especially cool and wet July and August. Day-time high temperatures were cooler than normal statewide for the spring and the summer, with no station in Alabama hitting the 100° mark in 2013.

2013 difference from normal

	Daily	Hi	Lo
Huntsville		-1.6°	-0.6°
Birmingham		-1.5°	+0.1°
Montgomery		+0.6°	+1.1°
Mobile		+0.1°	-0.2°

December, by comparison was warmer than normal — on average 0.7° F warmer than the December norm according to our statewide 25-city sample. Both Decatur and Troy saw their warmest December days on record: Decatur at 79° on Dec. 5 and Troy at 83° on Dec. 6.

At the same time, two major cold weather systems brought heavier than normal rainfall to the state. Our preliminary average was 7.44" for the month, which is just over 2.5" more than normal. Talladega had its wettest December on record, with 10.37" of rain. That broke the 8.43" record set in 1983.

And we should note, as much of the state recovers from the arctic cold, the recently passed 50 anniversary of the Dec. 31, 1963-Jan. 1, 1964 blizzard that dropped record snow across the south, including most of Alabama. We have gathered a few resources about that storm and linked them to our website.

Enjoy reading them and, stay warm.

- John Christy

Alabama Monthly Climate Summaries

Dec. 2013

Station	Station Began	Dec. Mean Dec. Norm	Dec. Hi Temp Record Hi	Dec. Low Temp Record Lo	Total Precip. Normal Prec.	Wettest Dec. Driest Dec.	Heaviest Day Record Day
Anniston	2/1903	47.5° 46.1°	78° 12/6/13 80° 12/7/51	25° 12/25/13 1° 12/13/62	9.22" 4.11"	10.32° 1983 0.71° 1980	2.29° 12/22/13 4.11° 12/20/51
Auburn	1/1893	48.9° 48.3°	77° 12/6/13 84° 12/20/24	25° 12/25/13 -1° 12/13/62	3.73" 5.26"	14.27° 1953 0.82° 1955	1.83° 12/28/13 6.22° 12/4/53
Birmingham	1/1930	47.3° 45.6°	77° 12/5/13 80° 12/7/51	20° 12/25/13 1°+ 12/23/89	7.06" 4.47"	12.63° 1983 0.81° 1980	2.57° 12/8/13 7.70° 12/27/42
Brewton	4/1977	51.6° 49.5°	79.8° 12/6/13 84° 12/9/98	26.1° 12/16/13 7° 12/13/62	5.66" 4.78"	14.96° 1972 1.13° 1980	2.60° 12/22/13 6.23° 12/21/72
Calera	9/1900	48.8° 45.9°	78° 12/6/13 79° 12/8/78	24° 12/25/13 -5° 12/26/83	10.34" 5.12"	13.61° 1983 0.65° 1917	3.77° 12/8/13 7.25° 12/28/42
Clanton	2/1893	47.3° 45.2°	77.5° 12/6/13 80°+ 12/9/78	21.7° 12/25/13 2° 12/13/62	9.39" 4.96"	13.61° 1983 2.20° 1980	2.74° 12/22/13 5.10° 12/12/61
Courtland		42.6° M	76.6° 12/5/13 M	18.8° 12/25/13 M	5.59° M	M M	1.15° 12/21/13 M
Cullman	7/1907	43.4° M	76.1° 12/5/13 M	16.7° 12/25/13 M	6.91° M	M M	1.39° 12/22/13 M
Decatur	2/1880	42.6° 43.5°	79° 12/5/13 78° 12/7/51	17° 12/25/13 1° 12/15/1901	5.52° 5.08°	11.52° 1911 0.88° 1965	1.18° 12/22/13 4.87° 12/29/54
Dothan	2/1902	54.7° 51.3°	82° 12/6/13 82° 12/6/51	28° 12/25/13 7° 12/13/62	8.64° 4.56°	13.72° 1964 0.50° 1955	2.59° 12/23/13 9.84° 12/25/64
Fairhope	8/1917	52.9° 52.5°	80.1° 12/5/13 84° 12/30/65	28.4° 12/25/13 8° 12/13/62	6.44° 4.40°	8.04° 1982 1.67° 1980	2.36° 12/28/13 9.80° 12/6/53
Gadsden	7/1893	45.2° 43.5°	75° 12/6/13 78°+ 12/7/98	19° 12/25/13 1° 12/13/62	8.82° 4.89°	10.33° 1983 0.43° 1980	2.54° 12/8/13 5.85° 12/12/61
Gainesville	6/1948	46.2° 46.1°	82.3° 12/5/13 83° 12/4/78	20.9° 12/25/13 2° 12/24/89	6.49° 4.81°	11.36° 1982 0.73° 1980	2.48° 12/8/13 4.77° 12/26/73
Greensboro	2/1890	47.1° 48.5°	78.0° 12/4/13 82° 12/6/51	21.4° 12/25/13 2° 12/23/89	8.87° 4.76°	13.36° 1973 0.37° 1980	3.75° 12/8/13 6.12° 12/28/42
Guntersville	12/1904	M 42.7°	78° 12/6/98 M	2° 12/23/89 M	M 4.76°	11.10° 1983 1.03° 1980	M 5.95° 12/28/42
Highland Home	3/1892	50.7° 48.5°	79.1° 12/6/13 83° 12/8/51	24.6° 12/25/13 4°+ 12/26/83	7.34° 4.60°	9.05° 1972 1.59° 1998	3.62° 12/22/13 4.00°+ 12/17/92
Huntsville	1/1959	44.5° 43.1°	78° 12/5/13 79° 12/4/98	20° 12/25/13 -3° 12/22/89	6.57° 5.59°	18.68° 1990 0.76° 1965	1.54° 12/8/13 9.07° 12/22/90

U.S. Drought Monitor Alabama



December 31, 2013

(Released Thursday, Jan. 2, 2014)

Valid 7 a.m. EST

Drought Conditions (Percent Area)

	None	D0-D4	D1-D4	D2-D4	D3-D4	D4
Current	97.35	2.65	0.00	0.00	0.00	0.00
Last Week 12/24/2013	89.25	10.75	2.66	0.00	0.00	0.00
3 Months Ago 10/1/2013	96.85	3.15	0.00	0.00	0.00	0.00
Start of Calendar Year 1/1/2013	40.07	59.93	33.67	19.47	9.81	0.00
Start of Water Year 10/1/2012	96.85	3.15	0.00	0.00	0.00	0.00
One Year Ago 1/1/2012	40.07	59.93	33.67	19.47	9.81	0.00

Intensity:

 D0 Abnormally Dry	 D3 Extreme Drought
 D1 Moderate Drought	 D4 Exceptional Drought
 D2 Severe Drought	

The Drought Monitor focuses on broad-scale conditions. Local conditions may vary. See accompanying text summary for forecast statements.

Author:
Matthew Rosencrans
CPC/NCEP/NWS/NOAA



<http://droughtmonitor.unl.edu/>

Alabama Monthly Climate Summaries

Dec. 2013

Station Began	Dec. Mean Dec. Norm	Dec. Hi Temp Record Hi	Dec. Low Temp Record Lo	Total Precip. Normal Prec.	Wettest Dec. Driest Dec.	Heaviest Day Record Day
Mobile 3/1900	53.0° 52.3°	80° 81°+	12/6/13 12/7/98	27° 8°	12/25/13 12/25/83	7.37" 4.66" 8.86° 1.29° 1995 1980 3.45° 12/22/13 4.68° 12/18/95
Montgomery 6/1948	51.7° 49.0°	83° 85°	12/5/13 12/2/82	25° 5°+	12/25/13 12/25/83	8.96° 4.97° 11.35° 1.39° 1961 1980 *5.19° 12/22/13 3.92° 12/16/92
Muscle Shoals 12/1940	44.3° 43.3°	77° 78°+	12/5/13 12/24/64	21° -5°	12/25/13 12/23/89	4.77° 5.44° 19.19° 0.65° 1990 1980 1.16° 5.20° 12/6/13 12/1/91
Russellville 9/1953	42.5° 42.0°	76.5° 85°	12/5/13 12/25/64	16.8° -7°	12/25/13 12/23/89	6.12° 5.36° 17.45° 1.02° 1990 1980 1.69° 5.31° 12/21/13 12/29/54
Scottsboro 10/1891	42.4° 42.1°	76.5° 80°	12/5/13 12/7/51	18.9° -1°	12/25/13 12/25/83	7.55° 5.65° 14.73° 1.34° 1990 1980 1.79° 6.80° 12/22/13 12/23/90
Selma 1/1895	48.4° 49.2°	81.5° 85°	12/6/13 +12/6/51	21.9° 5°	12/25/13 12/13/62	8.14° 4.72° 9.97° 1.29° 1983 1980 2.43° 7.08° 12/22/13 12/10/61
Talladega 2/1888	46.2° 43.6°	78.3° 80°	12/6/13 12/7/51	20.0° 0°	12/25/13 12/13/62	*10.37° 4.24° 8.43° 0.98° 1983 1979 3.26° 3.80° 12/8/13 12/31/73
Thomasville 9/1891	48.4° 59.6°	79.4° 85°	12/6/13 12/11/33	24.2° 3°	12/13/13 12/13/62	6.91° 5.16° 11.65° 1.12° 1971 1980 1.97° 6.29° 12/28/13 12/10/61
Troy 6/1908	51.9° 50.4°	*83° 82°	12/6/13 12/3/1912	23° 4°	12/25/13 12/13/62	6.11° 4.54° 14.95° 0.29° 1972 1980 2.54° 6.67° 12/22/13 12/6/72
Tuscaloosa 6/1948	48.1° 47.0°	80° 82°	12/5/13 12/3/78	22° 2°	12/25/13 12/23/89	7.41° 4.87° 11.05° 0.69° 1983 1980 2.07° 3.64° 12/8/13 12/20/51
Valley Head 1/1893	43.1° 41.3°	74.3° 85°	12/6/13 12/28/42	18.3° -8°	12/25/13 12/13/62	8.16° 4.86° 13.67° 0.77° 1961 1904 2.55° 4.28° 12/22/13 12/12/61
Statewide Dec. 2013	47.8°	83° 2 stations	14.2° Russellville	7.44°	19.19° M. Shoals	5.19° Montgomery
Dec. Norm	47.1°	85° 5 stations	-8° Valley Head	4.87°	0.29° Troy	9.84° Dothan

M: Data is missing or not available

*New Record

#This data is missing this month due to an instrument malfunction

^ This record differs from long-term data in the AOSC climate database:
http://nsstc.uah.edu/aclimate/climate/daily_climate_and_normals.php

Community Collaborative Rain, Hail & Snow Network (CoCoRAHS)

December 2013

	Ave. Total Precip.	# Stations		Ave. Total Precip.	# Stations
Autauga	8.40	4	Houston	8.81	1
Baldwin	4.87	27	Jackson	8.14	7
Barbour	n.a.	0	Jefferson	7.65	14
Bibb	12.83	1	Lamar	5.21	1
Blount	8.08	7	Lauderdale	5.75	11
Bullock	n.a.	0	Lawrence	6.40	2
Butler	n.a.	0	Lee	7.03	4
Calhoun	10.85	3	Limestone	6.03	11
Chambers	9.06	1	Lowndes	n.a.	0
Cherokee	9.23	1	Macon	0.90	2
Chilton	10.68	2	Madison	5.95	58
Choctaw	4.52	1	Marengo	n.a.	0
Clarke	7.76	3	Marion	6.18	1
Clay	n.a.	0	Marshall	7.67	11
Cleburne	n.a.	0	Mobile	6.76	17
Coffee	7.49	1	Monroe	7.87	2
Colbert	5.29	7	Montgomery	8.59	3
Conecuh	n.a.	0	Morgan	6.87	8
Coosa	10.86	2	Perry	n.a.	0
Covington	n.a.	0	Pickens	3.34	1
Crenshaw	n.a.	0	Pike	n.a.	0
Cullman	6.33	4	Randolph	7.85	1
Dale	8.02	2	Russell	9.08	2
Dallas	8.90	1	St. Clair	10.51	3
DeKalb	8.47	3	Shelby	9.33	22
Elmore	8.09	9	Sumter	n.a.	0
Escambia	6.69	1	Talladega	10.99	7
Etowah	4.54	1	Tallapoosa	11.35	4
Fayette	6.56	2	Tuscaloosa	7.33	4
Franklin	n.a.	0	Walker	n.a.	0
Geneva	n.a.	0	Washington	7.74	1
Greene	n.a.	0	Wilcox	7.77	2
Hale	n.a.	0	Winston	6.98	2
Henry	n.a.	0			

Normal December Precipitation*

Abbeville	4.62°
Alberta	5.22°
Alex City	4.84°
Aliceville	4.76°
Andalusia	5.04°
Ashland	5.09°
Athens	5.73°
Bay Minette	5.15°
Bessemer	4.90°
Billingsley	5.03°
Centreville WSMO	4.77°
Chatom	5.83°
Claiborne L&D	5.30°
Clayton	4.48°
Dauphin Isl.	4.34°
Elba	4.55°
Eufaula WR.	4.73°
Evergreen	4.05°
Fayette	5.08°
Geneva 2	4.48°
Greenville	5.12°
Haleyville	5.80°
Hamilton 3S	5.80°
Heflin	4.94°
Hurtsboro	4.42°
Jasper	6.07°
Lafayette	4.95°
Livingston	4.96°
Melvin	6.15°
Milstead	4.96°
Moulton	5.70°
Oneonta	5.06°
Perryville	5.16°
Plantersville	5.35°
Rock Mills	5.10°
Rockford	5.03°
Sylacauga	5.01°
Union Springs	4.68°
Uniontown	4.88°
Vernon	5.14°
Warrior L&D	4.82°
Wetumpka	4.94°

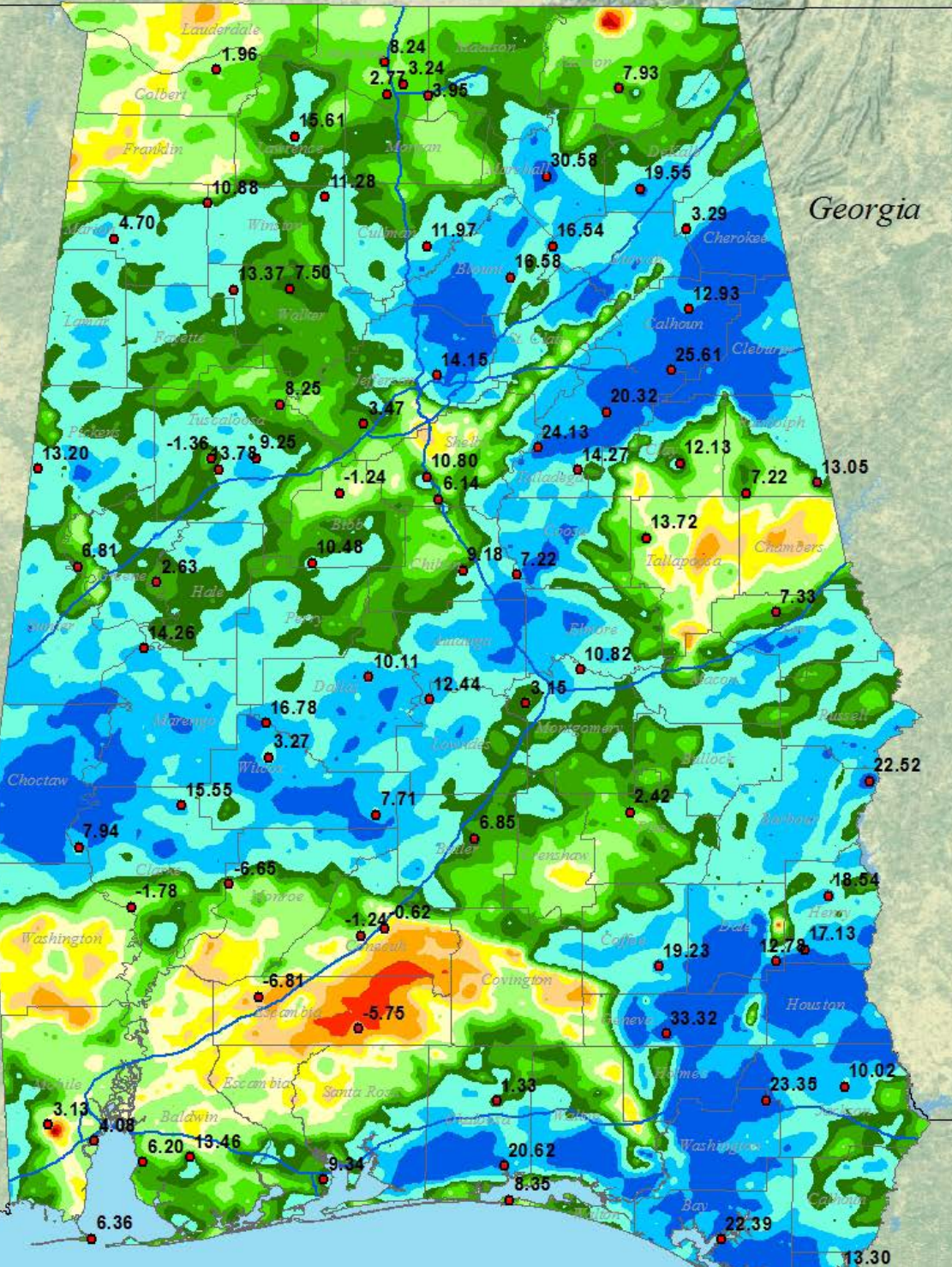
*Southeast Regional Climate Center
www.serrc.com

Departure from Normal Rainfall - 2013

Source: Co-Op Sites, ASOS Observations, CoCoRaHS Observers, and RFC Estimates
 Created by the National Weather Service Forecast Office, Birmingham, Alabama



Rainfall (Inches)



U.S. National Weather Service Birmingham Alabama @NWSBirmingham #bmwx

This map is an interpolation of actual reported values combined with RFC estimates and should be considered as an estimation only. Rainfall totals are from 7am Jan. 1st, 2013 through 7am Jan. 1st, 2014.

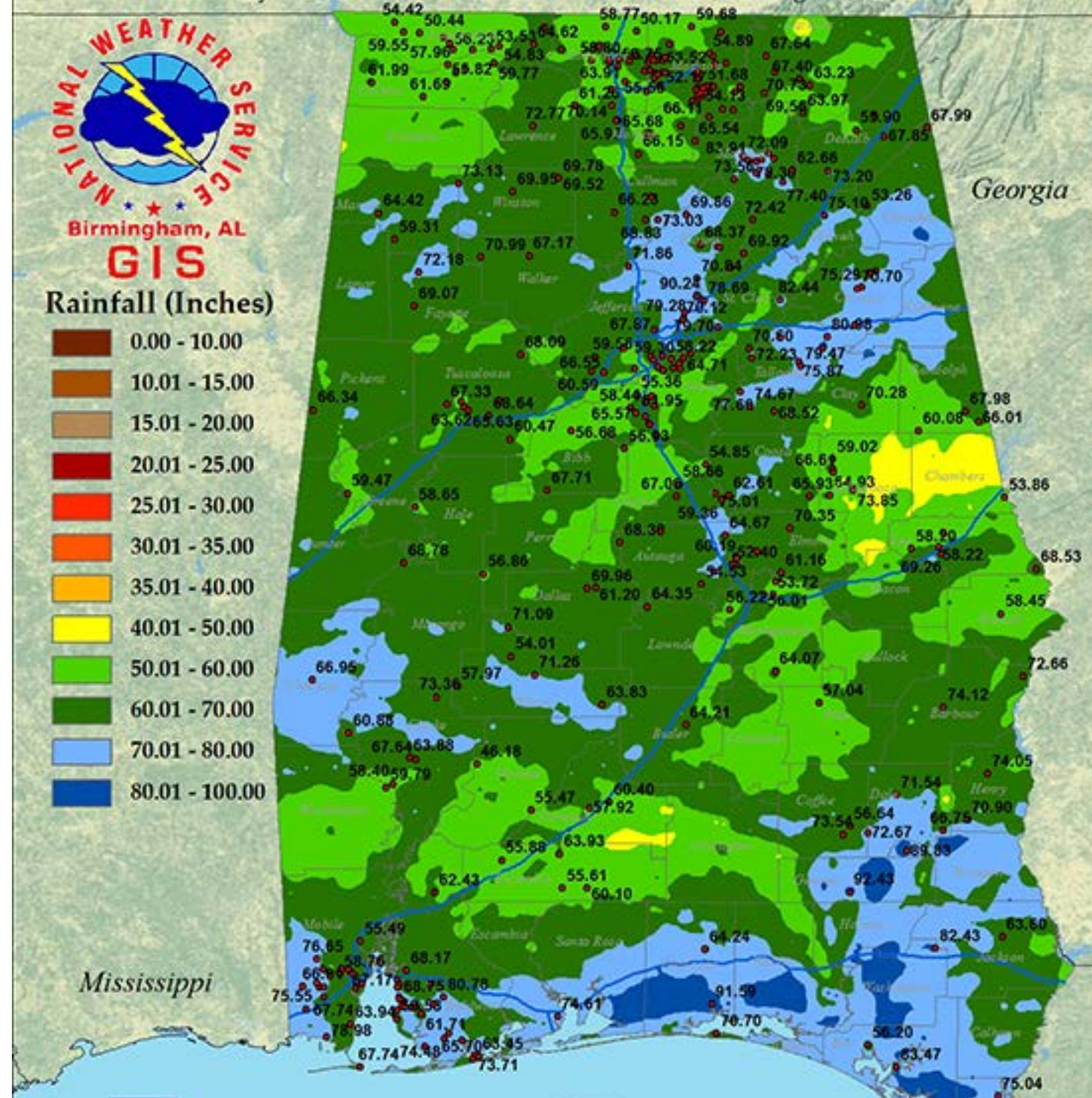
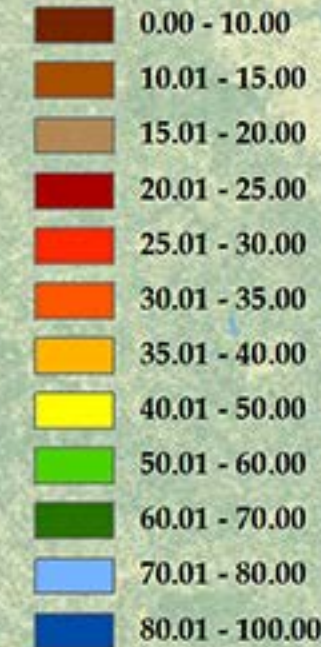
Source: US National Park Service

Total Yearly Rainfall - 2013

Source: Co-Op Sites, ASOS Observations, CoCoRaHS Observers, and RFC Estimates
 Created by the National Weather Service Forecast Office, Birmingham, Alabama



Rainfall (Inches)



U.S. National Weather Service Birmingham Alabama @NWSBirmingham #bmwx

This map is an interpolation of actual reported values combined with RFC estimates and should be considered as an estimation only. Rainfall totals are from 7am Jan. 1st, 2013 through 7am Jan. 1st, 2014.

Source: US National Park Service

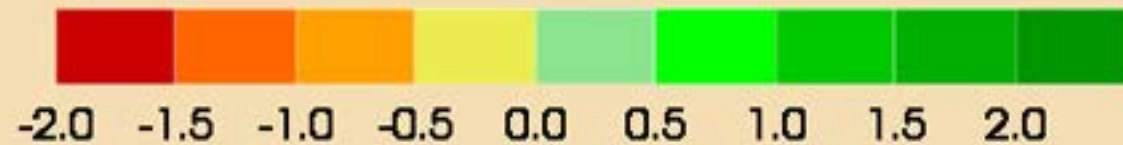
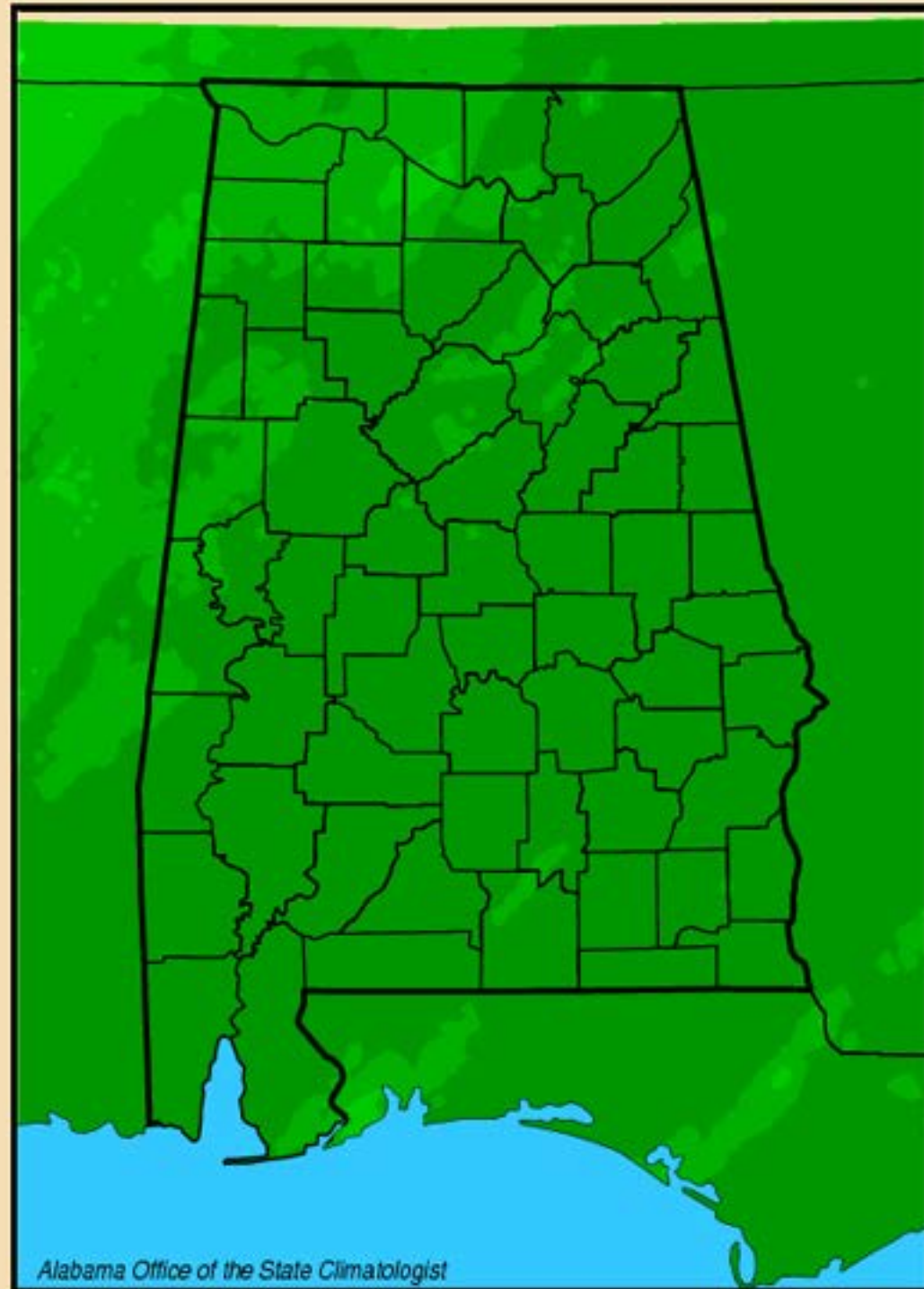
New Local Climate Records¹

December 2013

Precipitation, Daily

	Period of Record	New Record	Previous Record	Previous Year					
04 December 2013					23 December 2013				
TROY MUNICIPAL AP	44	0.38 in	0.33 in	2005	ABBEVILLE	65	3.60 in	2.21 in	1956
06 December 2013					ALEXANDER CITY	44	3.31 in	0.86 in	2011
MITCHELL DAM	76	1.43 in	1.11 in	1972	ASHLAND 3 ENE	73	3.34 in	1.80 in	2004
SAND MT SUBSTATION	64	1.05 in	1.00 in	1983	ATMORE	73	7.15 in	2.08 in	2004
07 December 2013					BAY MINETTE	100	3.80 in	2.27 in	1990
OPELIKA	56	1.25 in	1.20 in	1995	CODEN	57	1.76 in	1.72 in	2001
08 December 2013					EUFAULA WILDLIFE REF	46	3.50 in	1.05 in	2011
BERRY 3 NW	73	0.10 in	0.09 in	1950	EVERGREEN	123	4.33 in	2.80 in	1907
GADSDEN	60	2.40 in	1.40 in	1989	GENEVA NO 2	37	3.42 in	1.40 in	2004
09 December 2013					GREENVILLE	113	4.08 in	3.82 in	1941
ALEXANDER CITY	44	1.29 in	0.76 in	2009	JACKSONVILLE	65	1.03 in	0.88 in	1968
BILLINGSLEY	75	1.52 in	1.15 in	1966	JONES BLUFF L&D	32	4.00 in	1.72 in	2004
CAHABA PUMP HOUSE	32	3.32 in	0.67 in	1989	MILLERS FERRY L&D	32	3.00 in	1.41 in	2004
CALERA	113	5.54 in	4.20 in	1919	OPELIKA	56	5.20 in	2.00 in	2011
CHILDERSBURG WTR PL	56	3.75 in	1.25 in	1978	PINE APPLE	46	4.25 in	2.15 in	2004
DEMOPOLIS LOCK & DAM	62	5.70 in	1.88 in	1978	SYLACAUGA 4 NE	63	1.60 in	1.36 in	1956
GAINESVILLE LOCK	65	2.59 in	2.24 in	1951	WADLEY	80	3.12 in	2.78 in	1941
HOLT LOCK & DAM	32	2.04 in	1.26 in	2009	WALLACE 2 E	72	4.50 in	3.46 in	1956
LAY DAM	76	2.95 in	1.40 in	1986	29 December 2013				
LOGAN MARTIN DAM	32	5.11 in	0.71 in	2009	ADDISON	75	1.15 in	0.82 in	1993
SYLACAUGA 4 NE	63	2.78 in	1.35 in	1966	ALEXANDER CITY	44	1.72 in	1.36 in	1970
THORSBY EXP STATION	56	3.03 in	1.10 in	1978	ALICEVILLE L AND D	33	1.50 in	1.17 in	1993
UNIONTOWN	120	2.86 in	2.40 in	1953	ATMORE	73	2.02 in	1.67 in	1962
WARRIOR LOCK AND DAM	55	2.01 in	1.57 in	1978	BANKHEAD LOCK & DAM	56	1.62 in	1.19 in	1970
WEST BLOCTON	73	3.65 in	2.40 in	1953	BERRY 3 NW	73	1.36 in	0.86 in	1948
MITCHELL DAM	76	1.54 in	1.08 in	2004	CAHABA PUMP HOUSE	32	1.60 in	0.90 in	1997
10 December 2013					CLAIBORNE L&D	61	2.00 in	1.22 in	1966
JONES BLUFF L&D	32	1.00 in	0.63 in	2003	CLAYTON	85	2.74 in	1.98 in	1942
MILLERS FERRY L&D	32	1.00 in	0.70 in	2002	CODEN	57	2.11 in	1.31 in	1962
14 December 2013					COFFEEVILLE L&D	31	2.23 in	1.36 in	2012
BERRY 3 NW	73	0.96 in	0.28 in	1950	GENEVA NO 2	37	2.50 in	1.81 in	1981
22 December 2013					ENTERPRISE 4 W	47	2.30 in	1.66 in	2000
ALICEVILLE L AND D	33	1.85 in	0.68 in	1997	FAIRHOPE 2 NE	96	2.09 in	2.00 in	1927
ATHENS	72	1.10 in	1.04 in	2011	HOLT LOCK & DAM	32	1.75 in	0.81 in	1998
BERRY 3 NW	73	1.32 in	0.73 in	2006	JACKSON	52	2.03 in	1.54 in	1966
GADSDEN	60	3.35 in	2.70 in	1968	JACKSONVILLE	65	1.50 in	0.98 in	1948
HOLT LOCK & DAM	32	2.59 in	0.98 in	1997	JONES BLUFF L&D	32	2.00 in	1.40 in	2000
JASPER	53	1.86 in	1.76 in	1968	LOGAN MARTIN DAM	32	1.29 in	0.72 in	1991
MOBILE DOWNTOWN AP	65	3.14 in	2.43 in	2004	MILLERS FERRY L&D	32	2.00 in	1.40 in	2012
ROCK MILLS	75	2.34 in	1.65 in	1968	MITCHELL DAM	76	2.37 in	1.45 in	1954
SCOTTSBORO	122	2.42 in	2.35 in	1920	OPELIKA	56	1.93 in	1.90 in	1966
TROY MUNICIPAL AP	44	2.54 in	2.43 in	2011	PINE APPLE	46	2.10 in	1.65 in	2000
WALLACE 2 E	72	4.50 in	2.45 in	2006	UNIONTOWN	120	2.58 in	2.20 in	1970
WEISS DAM	32	1.32 in	0.74 in	2006	WARRIOR LOCK AND DAM	55	1.95 in	1.10 in	2012
					WEISS DAM	32	1.04 in	0.61 in	2007

Lawn-and-Garden Moisture Index for January 2, 2014



¹ <http://lwf.ncdc.noaa.gov/extremes/records/>

New Local Climate Records¹

December 2013

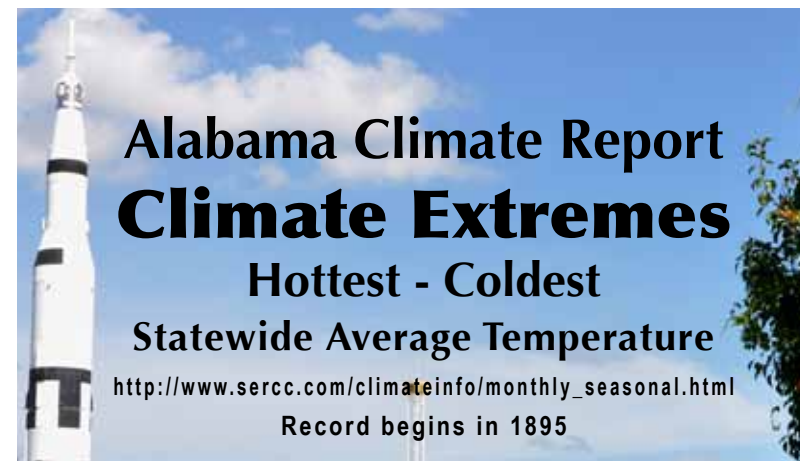
Maximum High Temperature, Daily

	Period of Record	New Record	Previous Record	Previous Hottest Day
02 Dec. 2013				
EUFAULA WILDLIFE REF	38	81.0°	79.0°	1982
04 Dec. 2013				
TUSCALOOSA MUNI AP	60	78.1°	75.9°	1961
05 Dec. 2013				
HALEYVILLE	74	77.0°	73.9°	1998
HAMILTON 3 S	51	75.9°	75.0°	2011
TUSCALOOSA MUNI AP	59	80.1°	77.0°	1954
06 Dec. 2013				
GAINESVILLE LOCK	55	82.9°	81.0°	1998
JASPER	45	78.1°	71.1°	2007
MOULTON 2	54	78.1°	75.9°	1998
07 Dec. 2013				
GENEVA NO 2	36	80.1°	78.1°	2001
14 Dec. 2013				
MOBILE DOWNTOWN AP	34	75.9°	73.9°	2007
15 Dec. 2013				
DAUPHIN ISLAND #2	35	72.0°	71.1°	1987
21 Dec. 2013				
BESSEMER 3 WSW	36	73.9°	73.0°	1984
HALEYVILLE	75	73.0°	71.1°	1971
22 Dec. 2013				
BREWTON 3 SSE	84	79.0°	79.0°	1948
DEMOPOLIS LOCK & DAM	57	78.1°	77.0°	1967
GAINESVILLE LOCK	56	79.0°	77.0°	2008
GUNTERSVILLE	55	72.0°	69.1°	1990
HAMILTON 3 S	51	78.1°	73.9°	1998
MOULTON 2	55	73.0°	68.0°	1998
SYLACAUGA 4 NE	52	75.9°	72.0°	1984
VERNON	55	79.0°	72.0°	1970
23 Dec. 2013				
JASPER	43	73.9°	73.0°	1970
VERNON	52	78.1°	75.9°	1970

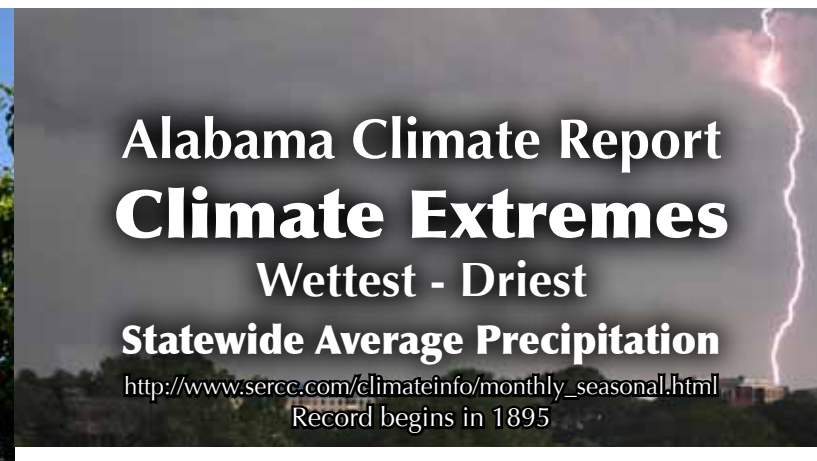
Precipitation, Wettest December Day on Record

	Period of Record	New Record	Previous Record	Previous Record Date
9 December 2013				
DEMOPOLIS LOCK & DAM	62	5.70 in	4.58 in	1968-12-22
LOGAN MARTIN DAM	32	5.11 in	4.82 in	1983-12-03
23 December 2013				
ATMORE	73	7.15 in	5.09 in	2009-12-15
OPELIKA	56	5.20 in	4.45 in	1972-12-21

¹ This record differs from long-term data in the AOSC climate database: http://nsstc.uah.edu/alclimate/climate/daily_climate_and_normals.php



Alabama Climate Report
Climate Extremes
Hottest - Coldest
Statewide Average Temperature
http://www.sercc.com/climateinfo/monthly_seasonal.html
Record begins in 1895



Alabama Climate Report
Climate Extremes
Wettest - Driest
Statewide Average Precipitation
http://www.sercc.com/climateinfo/monthly_seasonal.html
Record begins in 1895

Year-to-date

Hottest	1.	1927	67.80°
	2.	1925	67.28°
	3.	1921	67.23°
	4.	1938	66.95°
	5.	1911	66.77°
	6.	1935	66.74°
	7.	1945	66.64°
	8.	1933	66.64°
	9.	1949	66.45°
	10.	1922	66.41°
	11.	1954	66.40°
	12.	2012	66.18°
Coldest	1.	1976	62.38°
	2.	1940	62.80°
	3.	1983	62.80°
	4.	1901	62.89°
	5.	1979	62.93°
	6.	1968	62.94°
	7.	1996	63.08°
	8.	1969	63.14°
	9.	1958	63.15°
	10.	1967	63.22°
	11.	1992	63.31°
	12.	1966	63.35°
January through Nov. 2013	33.	2013	64.07°
AVG			64.81°

Year to Date

Wettest	1.	1975	71.42"
	2.	1929	66.69"
	3.	1979	65.83"
	4.	2009	64.46"
	5.	1946	63.89"
	6.	1948	63.47"
	7.	2003	62.20"
	8.	1964	61.37"
	9.	1983	61.32"
	10.	1973	61.12"
	11.	1989	60.14"
	12.	1997	59.71"
Driest	1.	1954	28.94"
	2.	1904	30.80"
	3.	1931	34.17"
	4.	1927	34.20"
	5.	2007	35.57"
	6.	1914	36.41"
	7.	1897	36.56"
	8.	1924	37.16"
	9.	1899	37.36"
	10.	1921	38.03"
	11.	1925	38.13"
	12.	1968	38.20"
January through Nov. 2013	14.	2013	58.17"
AVG			48.94"

Total Rainfall - December 2013

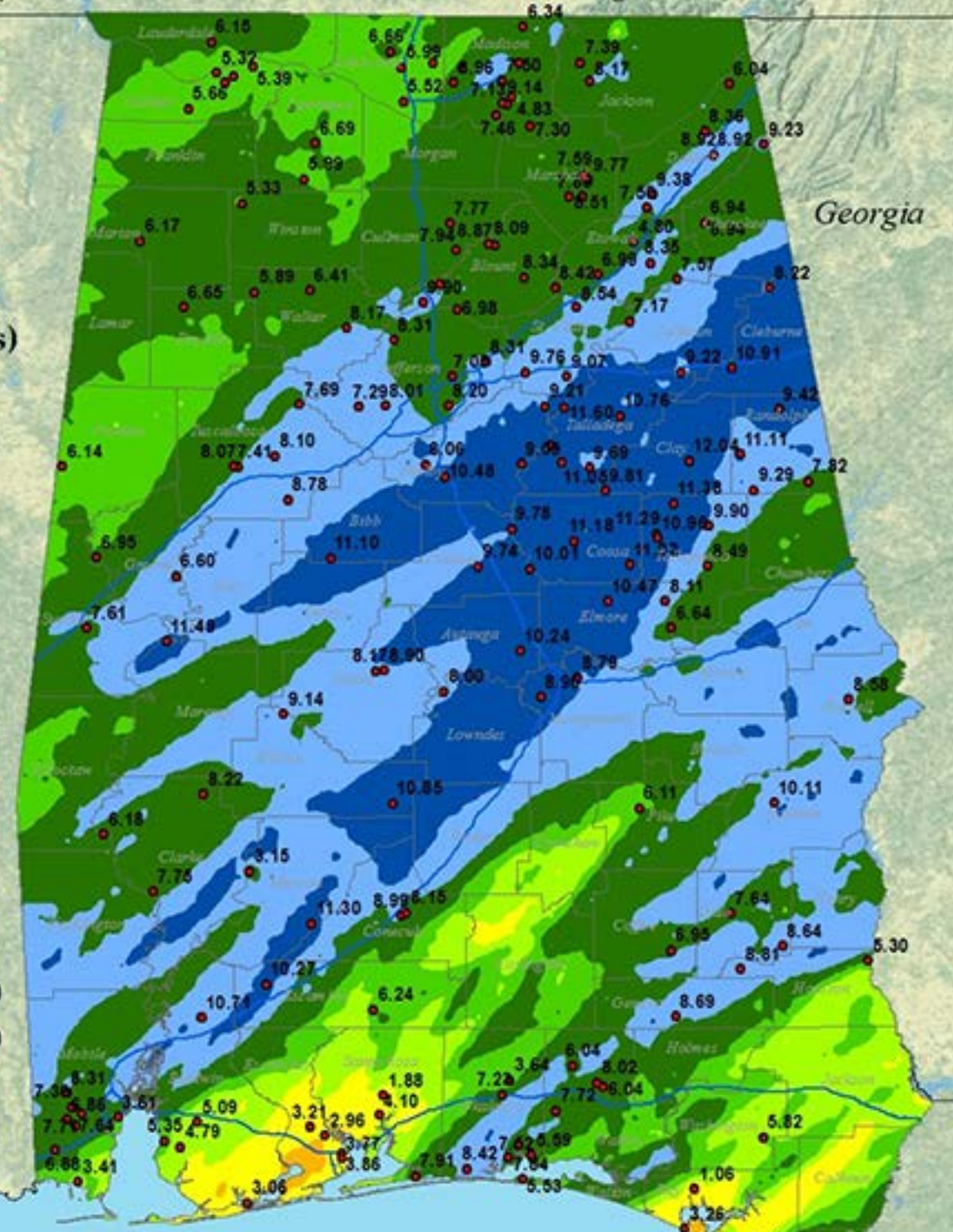
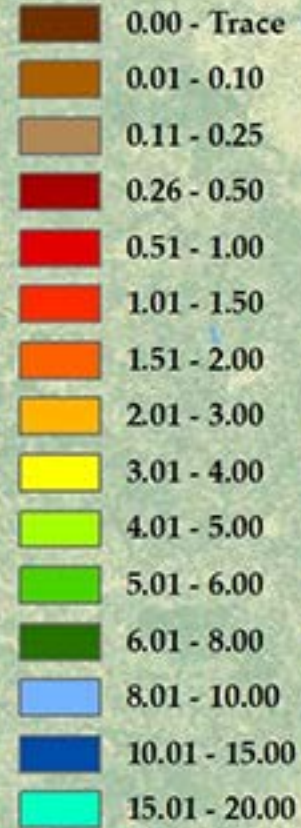
Source: Co-Op Sites, ASOS Observations, CoCoRaHS Observers, and RFC Estimates
Created by the National Weather Service Forecast Office, Birmingham, Alabama



Birmingham, AL

GIS

Rainfall (Inches)



Georgia

Mississippi

U.S. National Weather Service
Birmingham Alabama

@NWSBirmingham
#bmwx

This map is an interpolation of actual reported values combined with RFC estimates and should be considered as an estimation only.
Rainfall totals are from 7am Dec. 1st through 7am Jan. 1st, 2014

Source: US National Park Service

Alabama State Climatologist
John R. Christy
Alabama State Climatologist
The University of Alabama
in Huntsville
christy@nsstc.uah.edu
256-961-7763

Contact:

Phillip Gentry
UAHuntsville Communications
The University of Alabama in Huntsville
gentry@nsstc.uah.edu
256.961.7618

Bob Clymer
Assistant State Climatologist
The University of Alabama in Huntsville
bob.clymer@nsstc.uah.edu
256-961-7771

<http://nsstc.uah.edu/alclimatereport>