

# The Alabama Climate Report

Brought to you by the Office of the Alabama Climatologist

**Volume 3, Number 8, May 2013**



Dr. John Christy, Alabama State Climatologist

How cold was this past spring (March-May)?

I have a new way to tell. I'm a modest runner (modest in terms of skill, not attitude) and when the weather gets warm and humid I reduce the length of my runs and replace the lost miles by swimming laps at the neighborhood pool.

I usually start this switch by the beginning of May. This year I didn't dip my toe in for the first time until June 1 — and the water was still cold! I conclude, therefore, that it was a cold spring.

Lest you think the state climatologist relies on anecdotes instead of statistics, the numbers confirm my impressions. Our statewide sampling of weather stations shows that the mean temperature for May

2013 (68.1 F) was more than two degrees cooler than a normal May (70.5).

Two degrees might not sound like much, until you look at some of the specifics. On May 4, Dauphin Island had its coolest May temperature (50.0 F) in the 37 years that station has been reporting.

Ten stations saw record-setting lowest maximum May temperatures. Two of those, Scottsboro and Talladega, have climate records going back 114 years. On May 5, Scottsboro's high temperature for the day was only 48.9° F. That broke the previous record of 50° F set on May 20, 1894! The Sand Mountain Sub Station also set a May record that day with a high temperature that was only 46° F. Those low temps mean that for a large portion of north Alabama the high temperatures that day didn't reach 50.

Yes, it was cool in May. It was also very cool in March: According to the Southeastern Regional Climate Center, March 2013 was the seventh coolest March since 1895, with a mean temperature that was more than 5.5° F cooler than normal.

April was slightly (0.9° F) cooler than normal, so it will be interesting to see where the spring of 2013 ends up in the record book once May's cool temperatures are added to the tally.

I've been in touch with organizations which forecast general hurricane activity for the Atlantic basin, which includes the Gulf of Mexico. Every group I've checked is forecasting "above" normal to "much above" normal activity for the 2013 hurricane season, which began June 1.

This is especially interesting because the U.S. is experiencing its longest drought in major hurricanes to strike our coasts since recordkeeping began in 1850. As of today, we have gone 2,782 days (7+ years since Wilma on Oct 24, 2005) without a major strike.

I don't believe that's a trend. I think it is a warning: Mother Nature eventually balances out the statistics, so we are due. Certain patterns in ocean temperatures and atmospheric winds now present are associated with higher incidences of Atlantic hurricanes.

The average number of named storms (hurricanes and tropical storms) is 12 per year, with forecasts for 2013 ranging from 13 to 18. Here are a couple of quotes from forecasters: "We anticipate an above-average Atlantic basin hurricane season due to the combination of an anomalously warm tropical Atlantic and a relatively low likelihood of El Niño," Klotzbach and Gray. "A wild season is on the way, and the 'major hit drought' on the U.S. coast should end," Joe Bastardi.

I don't know where or when such storms may hit, and I hope Alabama is spared but keep tuned to the coming season. It could be noteworthy. Watch for these names as the year unfolds: Andrea (already a tropical storm in the Gulf of Mexico), Barry, Chantal, Dorian, Erin, Fernand, Gabrielle, Humberto, Ingrid, Jerry, Karen, Lorenzo, Melissa, Nestor, Olga, Pablo, Rebekah, Sebastien, Tanya, Van, and Wendy.

- John Christy

## Drought Monitor

# U.S. Drought Monitor

## Alabama

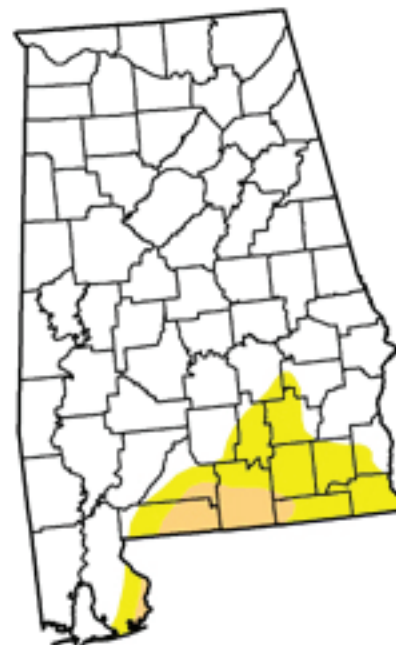
May 28, 2013  
Valid 7 a.m. EST

*Drought Conditions (Percent Area)*

	None	D0-D4	D1-D4	D2-D4	D3-D4	D4
Current	86.96	13.04	3.18	0.00	0.00	0.00
Last Week (05/21/2013 map)	94.56	5.44	0.00	0.00	0.00	0.00
3 Months Ago (02/26/2013 map)	88.56	11.44	1.63	0.00	0.00	0.00
Start of Calendar Year (01/01/2013 map)	40.07	59.93	33.67	19.47	9.81	0.00
Start of Water Year (09/25/2012 map)	71.58	28.42	19.42	15.36	8.69	0.00
One Year Ago (05/22/2012 map)	15.46	84.54	48.25	27.03	20.67	2.85

**Intensity:**

- D0 Abnormally Dry
- D1 Drought - Moderate
- D2 Drought - Severe
- D3 Drought - Extreme
- D4 Drought - Exceptional



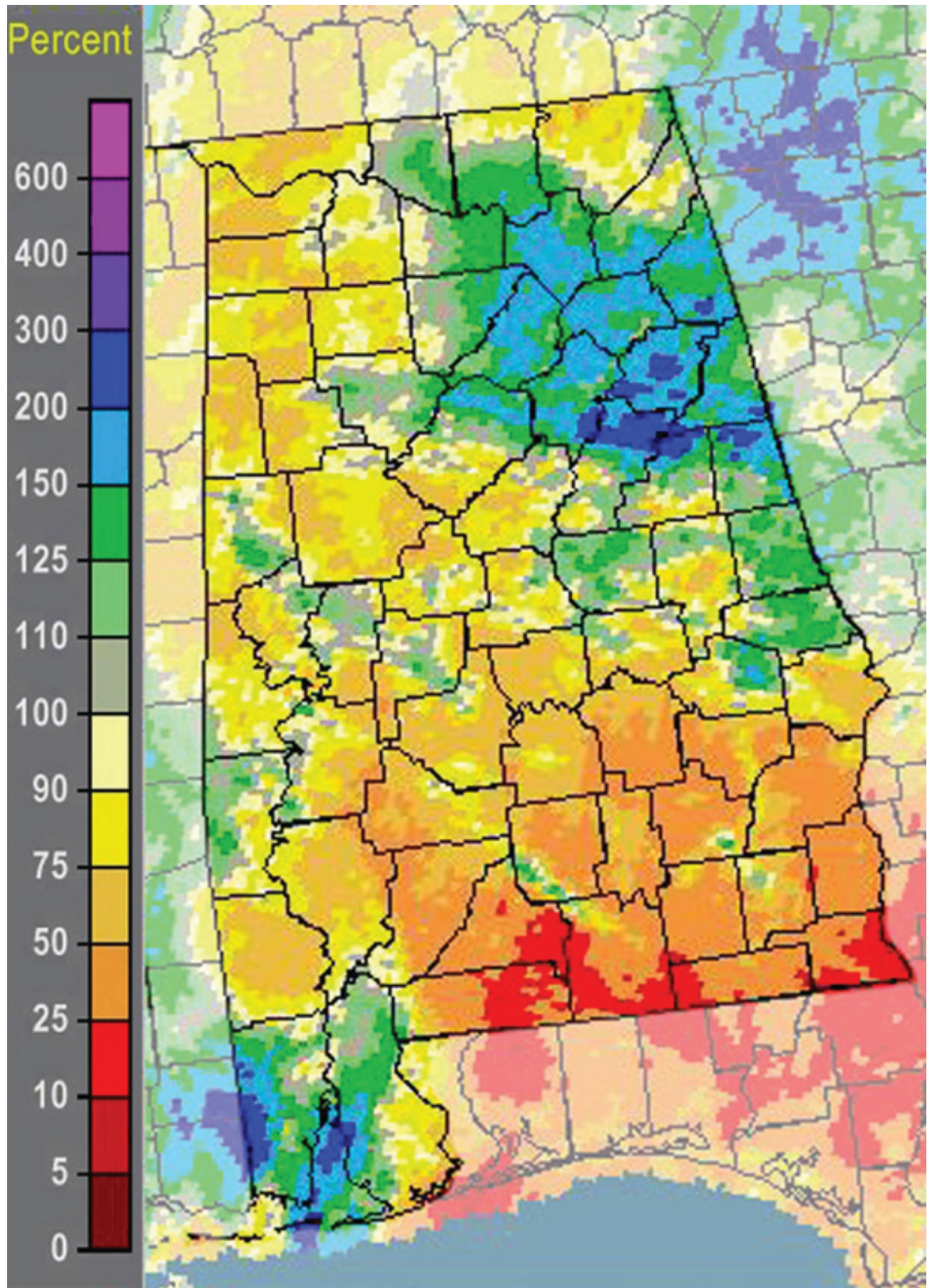
The Drought Monitor focuses on broad-scale conditions. Local conditions may vary. See accompanying text summary for forecast statements.



Released Thursday, May 30, 2013  
Brad Rippey, U.S. Department of Agriculture

<http://droughtmonitor.unl.edu>

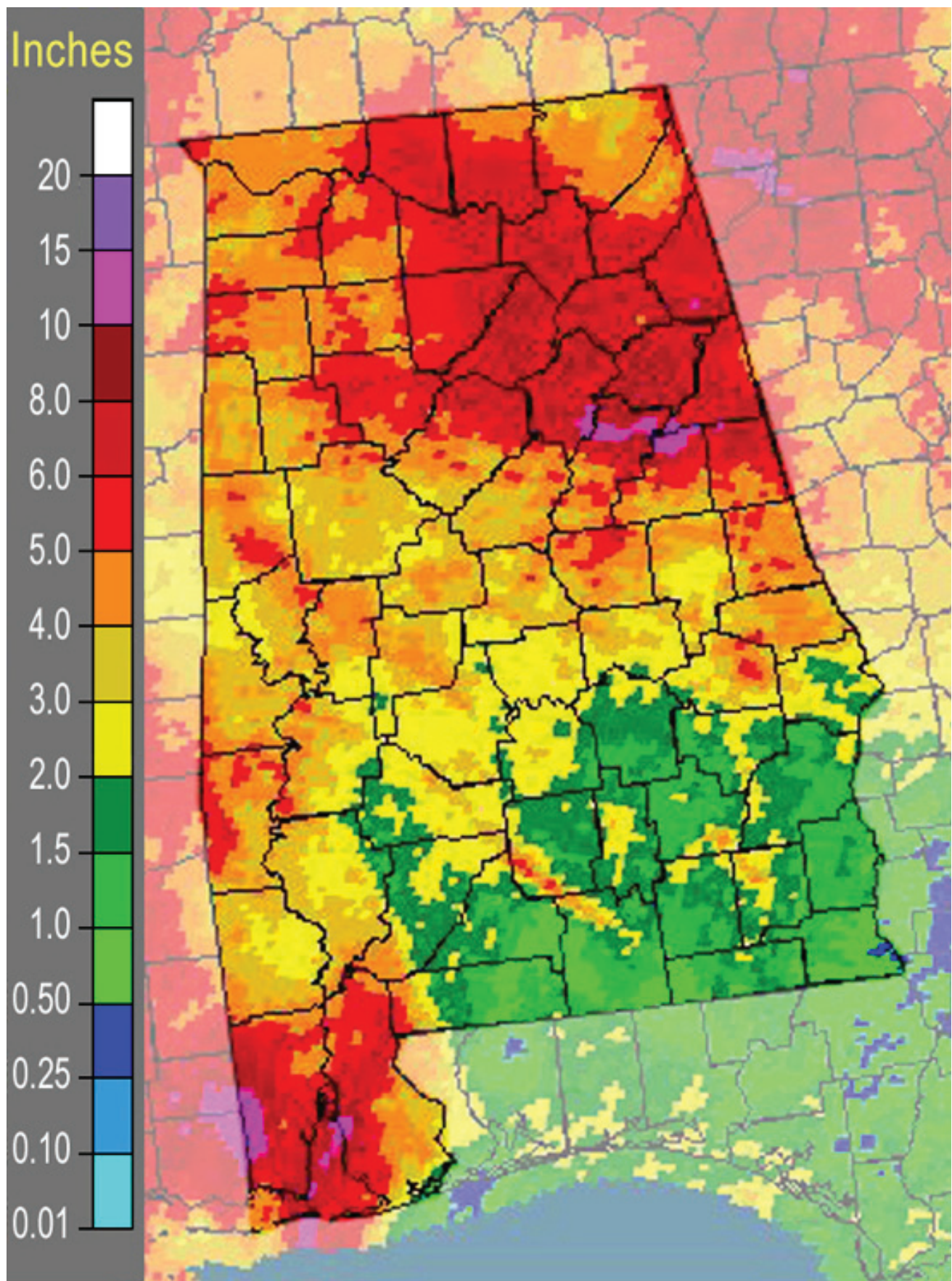
# Percent of Normal Precipitation



water.weather.com

***May 2013 NWS percentage of normal precipitation***

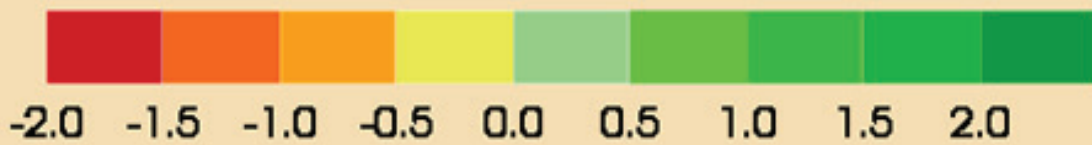
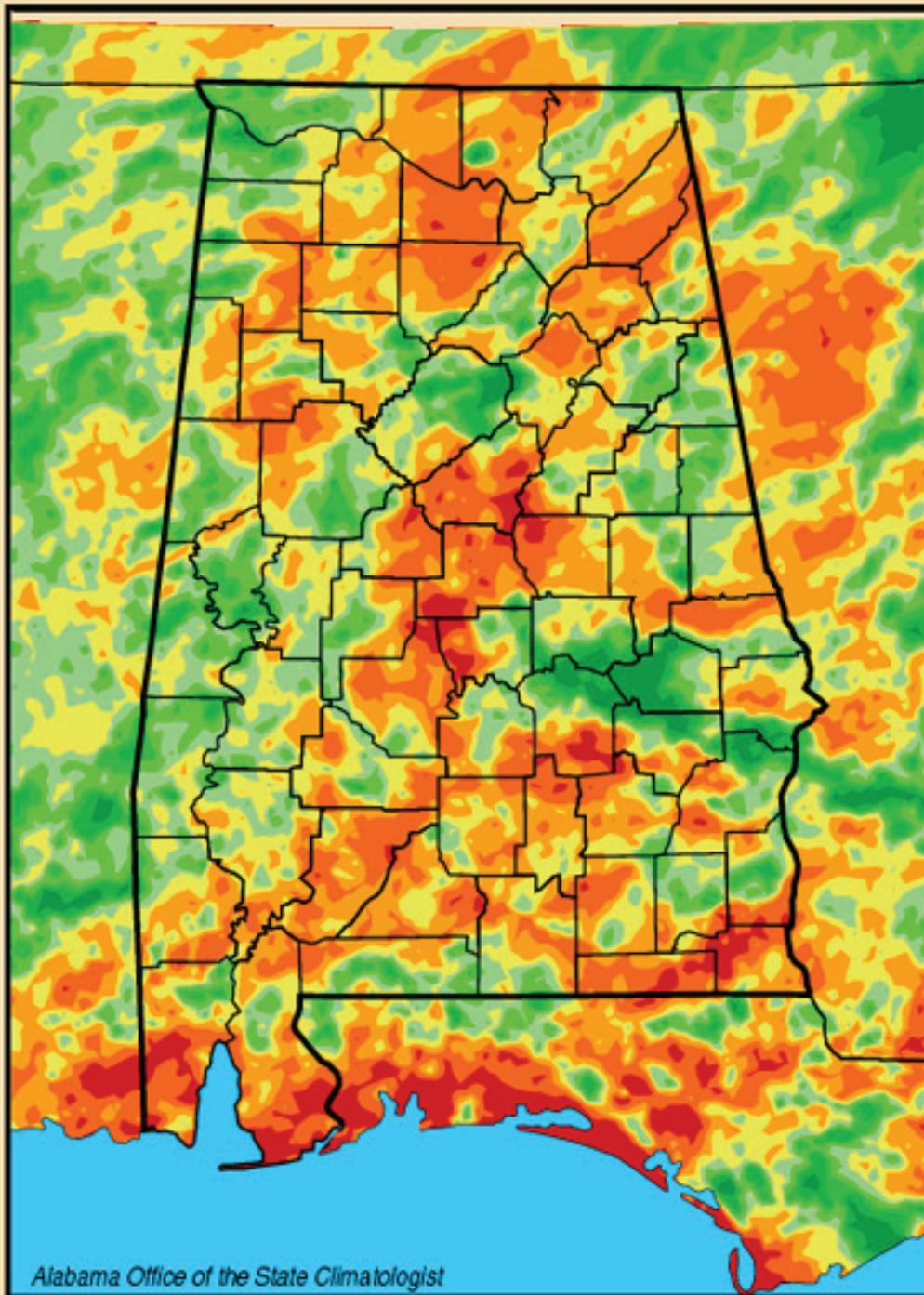
# Multi-sensor precipitation estimate



*May 2013 NWS multi-sensor precipitation estimate*

# Lawn and Garden Moisture Index

## Lawn-and-Garden Moisture Index for June 6, 2013



# Alabama Monthly Climate Summaries

## Alabama Monthly Climate Summaries

May 2013

	Station Began	May Mean May Norm	May Hi Temp Record Hi	May Low Temp Record Lo	Total Precip. Normal Prec.	Wettest May Driest May	Heaviest Day Record Day
Anniston	2/1903	67.6°	88° 5/21/13	40° 5/13/13	7.50"	8.59° 1983	<b>*4.51"</b> 5/17-18/13
		69.4°	98° 5/16/62	34° 5/13/60	4.16"	1.81° 1977	3.32" 5/19/83
Auburn	1/1893	69.0°	88° 5/30-31/13	43° 5/5/13	3.07"	10.33° 1915	1.20" 5/4/13
		71.7°	98° 5/27/1911	35° 5/13/60	3.75"	0.36° 1914	4.53" 5/7/15
Birmingham	1/1930	68.8°	89° 5/21/13	41° 5/5/13	5.96"	9.57° 1983	2.60" 5/17-18/13
		70.4°	99° 5/28/62	36° 5/4/71	4.83"	0.88° 2000	3.85" 5/6/67
Brewton	4/1977	69.1°	89.4° 5/23/13	41.2° 5/6/13	1.87"	15.97° 1991	0.93" 5/3/13
		70.9°	100° 5/26/33	34° 5/4/71	5.56"	0.85° 1988	5.00"+ 5/10/95
Calera	9/1900	68.6°	90° 5/21/13	43° 5/4-5/13	3.71"	9.99° 2003	1.85" 5/3-4/13
		69.5°	98° 5/21/62	31° 5/13/60	4.02"	0.34° 1977	3.65" 5/12/12
Clanton	2/1893	67.7°	88.9° 5/21/13	39° 5/5/13	3.19"	13.26° 1991	1.26" 5/4/13
		70.5°	99°+ 5/31/45	33° 5/13/60	4.36"	0.57° 1977	3.75" 5/20/46
Courtland		66.9°	N.A.#	39.6° 5/13/13	4.33"	M	1.15" 5/3/13
		M	M	M	M	M	M
Cullman	7/1907	64.9°	85.6° 5/21/13	36° 5/13/13	6.55"	M	1.56" 5/4/13
		M	M	M	M	M	M
Decatur	2/1880	66.6°	87° 5/21;29/13	39° 5/13/13	5.03"	8.44° 1907	2.52" 5/3-4/13
		70.2°	100° 3/31/14	34° 5/2/1909	3.87"	0.15° 1941	3.50" 5/29/1912
Dothan	2/1902	71.7°	92° 5/23;30/13	44° 5/5-6/13	<b>*0.03"</b>	8.73° 1947	0.02" 5/3/13
		74.6°	104° 5/30/37	44° 5/5/54	3.37"	0.45° 1962	4.10" 5/12/1903
Fairhope	8/1917	69.3°	86° 5/23/13	43.3° 5/4/13	8.88"	13.75° 1991	4.90" 5/2/13
		73.3°	98° 5/27/53	43° 5/13/60	5.60"	0.31° 1988	6.54" 5/20/81
Gadsden	7/1893	64.2°	83.1° 5/21/13	36.9° 5/13/13	7.15"	7.75° 1973	2.44" 5/6/13
		68.4°	99° 5/24/70	33° 5/13/60	4.59"	1.43° 2000	3.22" 5/22/67
Gainesville	6/1948	68.2°	88.3° 5/29/13	40.8° 5/4/13	2.63"	12.17° 1978	1.17" 5/3/13
		70.0°	97° 5/31/77	38° 5/5/86	4.43"	0.12° 2000	5.12" 5/1/78
Greensboro	2/1890	68.2°	88.2° 5/29/13	41.5° 5/13/13	3.41"	10.30° 1991	1.30" 5/3/13
		71.9°	98°+ 5/24/96	37°+ 5/10/66	4.47"	0.81° 1992	4.10" 5/18/30
Guntersville	12/1904	66.9°	86.4° 5/21/13	41.9° 5/13/13	8.36"	8.31° 1973	2.19" 5/6/13
		69.4°	99° 5/17/62	36° 5/2/63	4.47"	1.07° 1982	4.73" 5/3/97
Highland Home	3/1892	69.2°	88.2° 5/28-29/13	42.8° 5/5-6/13	1.65"	9.61° 1976	1.07" 5/4/13
		70.7°	98° 5/22/62	40° 5/13/81	4.05"	0.44° 2000	4.46" 5/4/78
Huntsville	1/1959	68.0°	90° 5/21;29/13	41° 5/5/13	6.60"	11.88° 1983	2.96" 5/3-4/13
		69.2°	96° 5/20/1960	36° 5/3/71	5.04"	0.78° 2007	4.64" 5/16/80

## Alabama Monthly Climate Summaries

May 2013

	Station Began	May Mean May Norm	May Hi Temp Record Hi	May Low Temp Record Lo	Total Precip. Normal Prec.	Wettest May Driest May	Heaviest Day Record Day
Mobile	3/1900	71.2°	90° 5/23-24/13	43° 5/4/13	7.99"	15.08" 1980	4.48° 5/1-2/13
		73.5°	100°+ 5/27/53	43° 5/13/60	6.10"	0.36" 1996	7.96° 5/5/81
Montgomery	6/1948	71.1°	93° 5/29/13	42° 5/5/13	1.63"	12.01" 1978	1.53° 5/3-4/13
		72.3°	98° 5/27/53	40° 5/4/71	4.14"	0.68" 1995	5.23° 5/9/78
Muscle Shoals	12/1940	66.5°	87.8° 5/29/13	37.4° 5/13/13	4.79"	11.86" 1983	1.44° 5/3/13
		68.8°	99° 5/29/41	36°+ 5/4/71	5.30"	1.18" 1987	3.32° 5/17/80
Russellville	9/1953	65.8°	86.4° 5/29/13	35.2° 5/13/13	4.31"	18.37" 1991	1.58° 5/3/13
		66.3°	95°+ 5/27/00	31°+ 5/4/76	5.87"	0.62" 1987	6.10° 5/8/84
Scottsboro	10/1891	65.3°	86.7° 5/21/13	37.6° 5/13/13	4.31"	9.81" 1983	1.92° 5/4/13
		68.1°	97° 5/29/41	32° 5/4/71	5.02"	1.27" 1992	5.00° 5/3/97
Selma	1/1895	69.0°	89.6° 5/21/13	40.8° 5/5/13	2.00"	9.01" 1991	0.89° 5/3/13
		71.8°	100° 5/27/53	40° 5/7/44	3.71"	0.10" 1977	3.40° 5/4/57
Talladega	2/1888	66.8°	88.2° 5/31/13	40.1° 5/13/13	9.69"	11.72" 1983	3.95° 5/18/13
		70.0°	96°+ 5/25/96	32° 5/4/71	4.71"	1.55" 1995	5.22° 5/19/83
Thomasville	9/1891	68.2°	88.3° 5/27-28/13	42.3° 5/13/13	2.87"	12.04" 1980	1.10° 5/1/13
		72.1°	99° 5/31/37	36° 5/13/60	4.75"	0.64" 1988	5.07° 5/1/40
Troy	6/1908	68.5°	90.3° 5/29/13	38.1° 5/5/13	1.08"	9.57" 1976	1.03° 5/4/13
		71.2°	99° 5/30/37	38° 5/4/71	3.73"	0.14" 1977	4.65° 5/6/53
Tuscaloosa	6/1948	69.9°	91° 5/29/13	43° 5/4/13	2.52"	11.13" 1976	1.69° 5/3-4/13
		71.9°	98° 5/31/51	36° 5/4/76	4.55"	0.44" 2000	3.91° 5/1/58
Valley Head	1/1893	64.1°	85.3° 5/21/13	35.4° 5/13/13	4.96"	8.63" 1978	2.64° 5/4/13
		66.4°	94°+ 5/29/62	29°+ 5/4/76	4.70"	1.08" 1992	4.19° 5/3/97
Statewide May 2013		68.1°	93° Montgomery	35.2° Russellville	4.43"	18.37" Russellville	3.21" Gadsden
May Norm		70.5°	104° Dothan	29°+ Valley Head	4.58"	0.10" Selma	9.60" Brewton

M: Data is missing or not available

\*New Record

#This data is missing this month due to an instrument malfunction

^ This record differs from long-term data in the AOSC climate database:

[http://nsstc.uah.edu/aclimate/climate/daily\\_climate\\_and\\_normals.php](http://nsstc.uah.edu/aclimate/climate/daily_climate_and_normals.php)

# Volunteer Precipitation Reports

## Community Collaborative Rain, Hail & Snow Network (CoCoRAHS)

May 2013

	Ave. Total Precip.	# Stations
Autauga	2.31	3
Baldwin	6.18	27
Barbour	0.00	0
Bibb	2.78	1
Blount	6.74	8
Bullock	n.a.	0
Butler	n.a.	0
Calhoun	8.23	3
Chambers	3.97	1
Cherokee	5.16	1
Chilton	3.56	2
Choctaw	4.42	1
Clarke	3.88	2
Clay	n.a.	0
Cleburne	n.a.	0
Coffee	1.16	1
Colbert	5.12	8
Conecuh	n.a.	0
Coosa	3.67	2
Covington	n.a.	0
Crenshaw	n.a.	0
Cullman	5.04	5
Dale	2.84	2
Dallas	3.53	1
DeKalb	3.17	5
Elmore	1.88	7
Escambia	1.20	1
Etowah	8.05	1
Fayette	4.44	2
Franklin	n.a.	0
Geneva	n.a.	0
Greene	n.a.	0
Hale	n.a.	0
Henry	n.a.	0

	Ave. Total Precip.	# Stations
Houston	2.12	1
Jackson	5.60	6
Jefferson	6.22	12
Lamar	3.72	1
Lauderdale	4.69	15
Lawrence	5.28	1
Lee	2.18	4
Limestone	5.65	13
Lowndes	n.a.	0
Macon	6.23	1
Madison	6.21	60
Marengo	n.a.	0
Marion	3.94	1
Marshall	8.07	11
Mobile	8.46	18
Monroe	3.20	2
Montgomery	1.21	5
Morgan	6.26	7
Perry	n.a.	0
Pickens	n.a.	0
Pike	n.a.	0
Randolph	6.21	1
Russell	2.52	2
St. Clair	8.70	3
Shelby	4.41	19
Sumter	n.a.	0
Talladega	8.50	6
Tallapoosa	3.36	4
Tuscaloosa	2.93	4
Walker	2.48	1
Washington	3.60	1
Wilcox	2.16	2
Winston	5.23	2

### Normal May

#### Precipitation\*

Abbeville .....	4.03"
Alberta .....	4.25"
Alex City .....	4.42"
Aliceville .....	3.90"
Andalusia.....	4.69"
Ashland.....	4.44"
Athens .....	4.12"
Bay Minette.....	5.48"
Bessemer ...	5.16"
Billingsley.....	3.70"
Centreville WSMO .	4.56"
Chatom.....	5.19"
Claiborne L&D .....	4.33"
Clayton .....	4.00"
Dauphin Isl.....	5.51"
Elba .....	4.27"
Eufaula WR .....	4.04"
Evergreen.....	4.69"
Fayette.....	4.42"
Geneva 2.....	4.52"
Greenville .....	4.12"
Haleyville .....	4.97"
Hamilton 3S.....	5.92"
Heflin .....	4.87"
Hurtsboro.....	4.53"
Jasper.....	5.14"
Lafayette.....	4.29"
Livingston .....	4.18"
Melvin .....	4.52"
Milstead .....	3.93"
Moulton.....	4.97"
Oneonta.....	4.44"
Perryville.....	3.72"
Plantersville .....	4.00"
Rock Mills .....	3.95"
Rockford .....	4.32"
Sylacauga.....	3.80"
Union Springs.....	3.83"
Uniontown.....	3.83"
Vernon .....	4.94"
Warrior L&D.....	4.14"
Wetumpka .....	3.63"

\*Southeast Regional Climate Center  
www.serrc.com



# New Local Climate Records<sup>1</sup>

May 2013

## Minimum Low Temperature, Month

	Period of Record	New Record	Previous Record	Previous Date
<b>4 May 2013</b>				
DAUPHIN ISLAND #2	37	50.0°F	53.1°F	1992-05-09

## Minimum Low Temperature, Daily

	Period of Record	New Record	Previous Record	Previous Year
<b>3 May 2013</b>				
MOBILE DOWNTOWN AP .....	33	48.9°F	51.1°F	2004
<b>4 May 2013</b>				
ATMORE .....	51	43.0°F	44.1°F	1997
MOBILE DOWNTOWN AP .....	34	45.0°F	46.0°F	2004
DAUPHIN ISLAND #2.....	37	50.0°F	57.9°F	1983
<b>5 May 2013</b>				
WETUMPKA.....	66	39.0°F	42.1°F	2011
GENEVA NO 2.....	36	41.0°F	42.1°F	1997
ENTERPRISE 4 W .....	40	42.1°F	43.0°F	1971
FAIRHOPE 2 NE.....	93	43.0°F	44.1°F	1954
<b>6 May 2013</b>				
GREENVILLE.....	82	39.0°F	42.1°F	2011
ALEXANDER CITY .....	42	39.9°F	41.0°F	2011
GENEVA NO 2.....	36	39.9°F	45.0°F	2011
DEMOPOLIS L&D .....	58	42.1°F	43.0°F	1995
ENTERPRISE 4 W .....	38	42.1°F	46.9°F	1968
HEADLAND.....	61	45.0°F	46.0°F	1968
DAUPHIN ISLAND #2.....	37	55.9°F	59.0°F	2011
<b>8 May 2013</b>				
DEMOPOLIS L&D .....	59	42.1°F	44.1°F	1989
<b>13 May 2013</b>				
HAMILTON 3 S.....	50	33.1°F	35.1°F	1989
WETUMPKA.....	65	39.9°F	45.0°F	1941
GREENVILLE.....	81	41.0°F	42.1°F	1960
ALEXANDER CITY .....	43	42.1°F	44.1°F	1989
GENEVA NO 2.....	36	44.1°F	46.9°F	2006
ENTERPRISE 4 W .....	39	48.0°F	51.1°F	2008
<b>14 May 2013</b>				
HAMILTON 3 S.....	50	34.0°F	39.9°F	1981
GAINESVILLE LOCK.....	55	44.1°F	46.9°F	2002
GREENVILLE.....	82	45.0°F	46.0°F	1960
GENEVA NO 2.....	36	45.0°F	46.9°F	2006
ENTERPRISE 4 W .....	41	48.9°F	50.0°F	2006
<b>15 May 2013</b>				
OPELIKA.....	50	39.0°F	41.0°F	1960
GENEVA NO 2.....	37	48.9°F	51.1°F	2001
<b>17 May 2013</b>				
DEMOPOLIS L&D .....	59	43.0°F	45.0°F	1973
<b>25 May 2013</b>				
HAMILTON 3 S.....	50	41.0°F	42.1°F	1979
GAINESVILLE LOCK.....	55	44.1°F	46.9°F	2012
GREENVILLE.....	82	45.0°F	48.9°F	2002
WETUMPKA.....	65	48.0°F	48.9°F	1935
GENEVA NO 2.....	36	50.0°F	52.0°F	1979
<b>26 May 2013</b>				
GAINESVILLE LOCK.....	55	44.1°F	46.0°F	1979

## Coollest Maximum High Temperature, Month

	Period of Record	New Record	Previous Record	Previous Date
<b>5 May 2013</b>				
SAND MT SUBSTATION	63	46.0°F	51.1°F	1981-05-12
SCOTTSBORO	114	48.9°F	50.0°F	1894-05-20
BELLE MINA 2 N	63	52.0°F	53.1°F	1981-05-12
TALLADEGA	114	52.0°F	57.0°F	1921-05-03
SYLACAUGA 4 NE	52	53.1°F	59.0°F	1960-05-12
BESSEMER 3 WSW	36	55.0°F	62.1°F	1981-05-11
TUSCALOOSA MUNI AP	51	57.9°F	61.0°F	1971-05-13
<b>6 May 2013</b>				
RUSSELLVILLE NO 2	59	53.1°F	55.0°F	1981-05-12
BANKHEAD L&D	55	55.0°F	57.9°F	2011-05-17
GAINESVILLE LOCK	55	57.0°F	59.0°F	1971-05-14

# New Local Climate Records<sup>1</sup>

## May 2013

### Precipitation, Daily

	Period of Record	New Record	Previous Record	Previous Year					
<b>1 May 2013</b>									
MOBILE DOWNTOWN AP	65	4.82 in	1.32 in	1957	WEISS DAM	31	0.67 in	0.62 in	2011
<b>2 May 2013</b>					WEST BLOCTON	73	2.38 in	1.80 in	1978
BAY MINETTE	99	4.60 in	3.81 in	1949	<b>5 May 2013</b>				
COFFEEVILLE L&D	30	2.20 in	1.90 in	2004	ASHLAND 3 ENE	73	1.01 in	0.90 in	1967
CODEN	56	4.77 in	2.56 in	1977	SAND MT SUBSTATION	64	0.80 in	0.65 in	1991
DAUPHIN ISLAND #2	37	4.62 in	1.00 in	2004	SYLACAUGA 4 NE	63	0.82 in	0.63 in	2006
FAIRHOPE 2 NE	95	7.63 in	5.59 in	1985	WEISS DAM	31	0.50 in	0.44 in	2009
JACKSON	51	2.22 in	1.85 in	1967	<b>6 May 2013</b>				
MILLERS FERRY L&D	32	1.00 in	0.81 in	2004	BERRY 3 NW	73	0.11 in	0.07 in	2009
MOBILE DOWNTOWN AP	65	3.17 in	1.53 in	1957	<b>7 May 2013</b>				
ROBERTSDALE	101	2.75 in	2.62 in	1937	WEISS DAM	31	0.77 in	0.74 in	1984
<b>3 May 2013</b>					<b>12 May 2013</b>				
TUSCALOOSA MUNI AP	64	1.53 in	1.45 in	1984	BERRY 3 NW	73	0.49 in	0.09 in	2009
<b>4 May 2013</b>					<b>18 May 2013</b>				
ALICEVILLE L&D	33	1.57 in	0.72 in	2008	TALLADEGA	125	4.30 in	1.71 in	2003
ATHENS	72	2.05 in	1.50 in	1993	HIGHTOWER	71	4.20 in	1.90 in	2003
BANKHEAD LOCK & DAM	56	2.14 in	2.10 in	1993	HAMILTON 3 S	51	2.87 in	2.37 in	2003
BERRY 3 NW	73	2.43 in	1.11 in	2009	WADLEY	80	2.86 in	1.56 in	1969
BILLINGSLEY	74	2.17 in	1.30 in	1957	ROCK MILLS	74	2.55 in	2.10 in	2004
GAINESVILLE LOCK	64	1.20 in	1.14 in	1978	OPELIKA	56	2.00 in	0.94 in	1980
LEEDS	96	2.05 in	1.68 in	2002	JACKSONVILLE	64	2.00 in	1.27 in	1993
MILLERS FERRY L&D	32	1.57 in	1.54 in	2009	MOULTON 2	56	1.86 in	0.98 in	2003
MOULTON 2	56	1.98 in	1.80 in	2002	WEISS DAM	31	1.20 in	1.10 in	1983
PINE APPLE	45	1.74 in	1.40 in	2003	BERRY 3 NW	73	1.15 in	0.33 in	2009
ROCK MILLS	74	2.08 in	1.76 in	1953	ALEXANDER CITY	43	1.06 in	0.96 in	2002
TALLADEGA	125	1.95 in	1.75 in	1978	LOGAN MARTIN DAM	31	0.88 in	0.25 in	2009
TUSCALOOSA OLIVER DAM	113	1.91 in	1.88 in	2012	<b>19 May 2013</b>				
WALNUT GROVE	71	2.80 in	2.00 in	2002	TROY MUNICIPAL AP	44	0.27 in	0.26 in	2001
WARRIOR L&D	55	1.91 in	1.63 in	1994					

### Precipitation, Wettest May Day on Record

	Period of Record	New Record	Previous Record	Previous Year
MOBILE DOWNTOWN AP	65	4.82 in	4.75 in	2003-05-18
FAIRHOPE 2 NE	95	7.63 in	6.54 in	1981-05-20

<sup>1</sup> <http://lwf.ncdc.noaa.gov/extremes/records/>

\* This record differs from long-term data in the AOSC climate database:  
[http://nsstc.uah.edu/alclimate/climate/daily\\_climate\\_and\\_normals.php](http://nsstc.uah.edu/alclimate/climate/daily_climate_and_normals.php)

**Alabama State Climatologist**

**John R. Christy**

Alabama State Climatologist

The University of Alabama

in Huntsville

christy@nsstc.uah.edu

256-961-7763

**Contact:**

**Phillip Gentry**

UAHuntsville Communications

The University of Alabama in Huntsville

gentry@nsstc.uah.edu

256.961.7618

**Bob Clymer**

Assistant State Climatologist

The University of Alabama in Huntsville

bob.clymer@nsstc.uah.edu

256-961-7771

<http://nsstc.uah.edu/alclimatereport>