



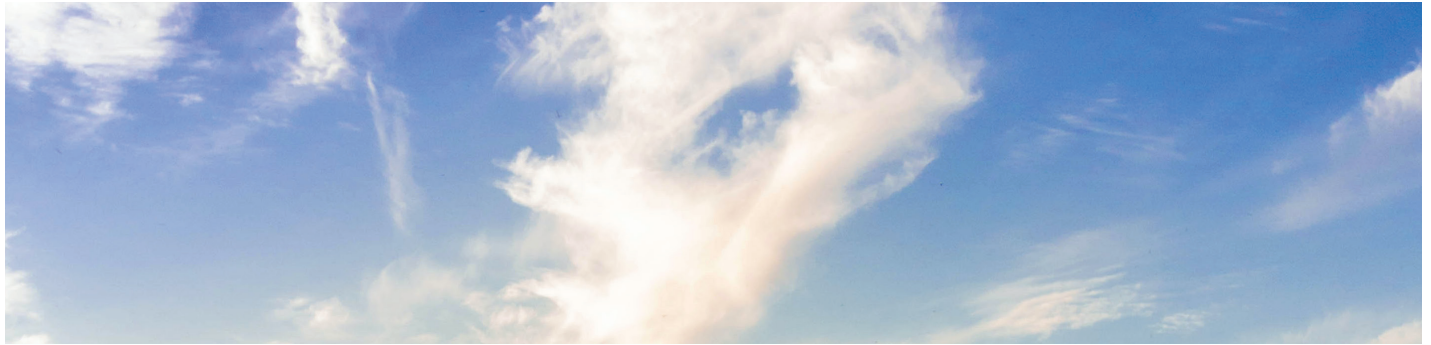
The
Alabama
Climate Report

Brought to you by the Office of the Alabama Climatologist

APRIL 2023



Volume 14, Number 12 :: MARCH 2023



April was relatively calm in terms of severe weather, a stark difference from March. Five tornadoes were reported during the first few days of the month, where unfortunately one fatality occurred from an EF3 tornado in northern Madison County on April 1st. Additionally, a single observed tornado was observed on the 21st, bringing the total for the month to six tornadoes. This is considerably lower than the average number of tornadoes Alabama observes in April, which is typically around 14.

Continuing the warmer than normal trend in 2023, April recorded a monthly average temperature of 63.3°F, which is 0.5°F higher than the long-term average of 62.8°F. The first week of April was much warmer than usual in Alabama, with four stations (Troy Municipal Airport, Andalusia-Opp Airport, Talladega, and a station in Conecuh National Forest) recording the warmest temperature of the month at 91°F on the 4th/5th. In contrast, the rest of the month was cooler or close to normal in terms of average temperature throughout Alabama. A station in DeSoto State Park recorded the coldest location of the month at 32°F on the 11th.

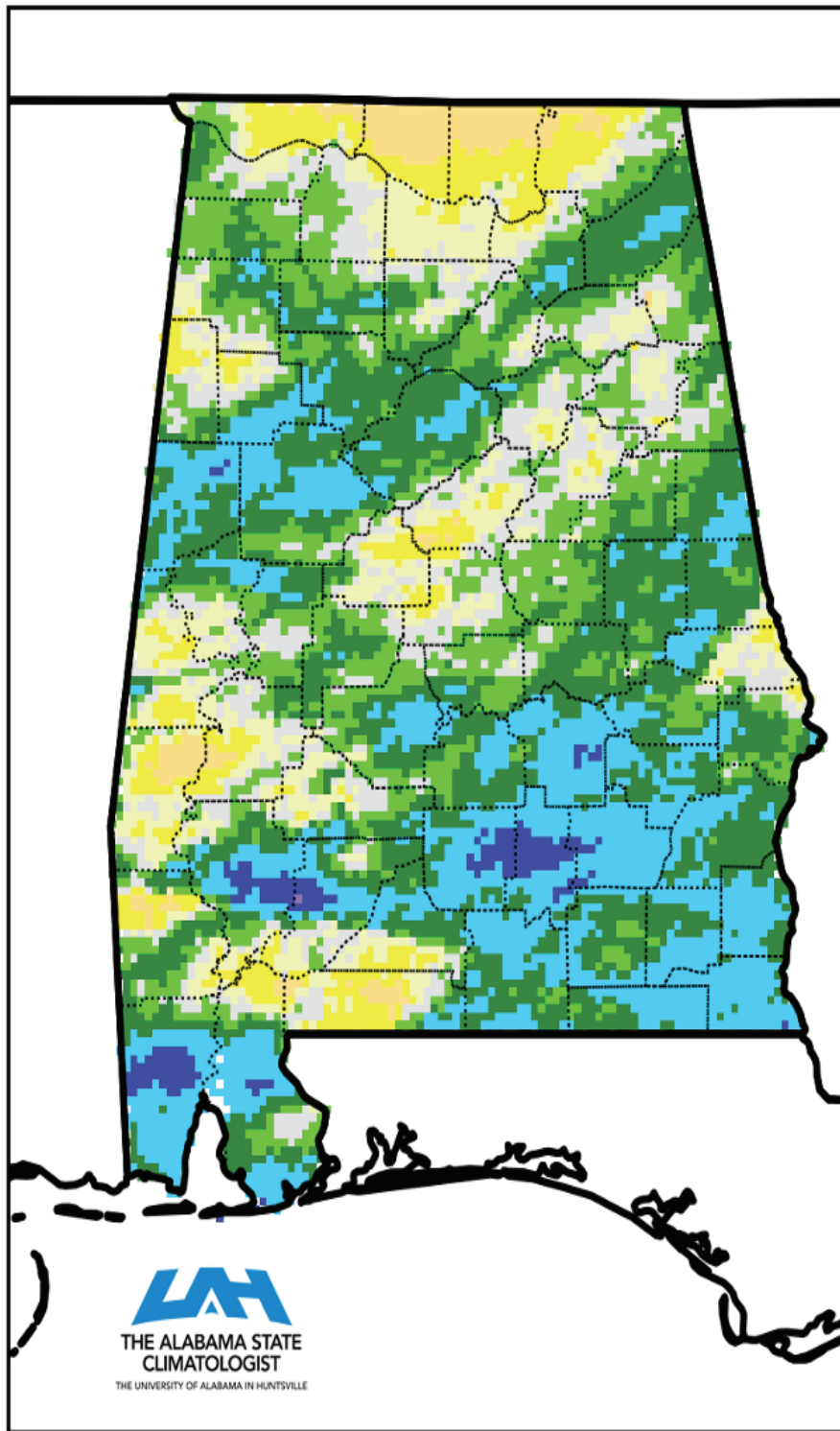
Precipitation varied across the state due to the sporadic nature of spring storms this April, as seen in the figure below. Statewide, April was slightly wetter than normal, with 4.99 inches of rainfall, which was 0.18 inches above the long-term average of 4.81 inches. Dauphin Island 4.5E station recorded the highest amount of rainfall for the month at 10.47 inches. In contrast, the Evergreen Middleton Airport recorded the least amount of rainfall at 2.26 inches, with no missing observations.

Though overall demand was not particularly high, in some areas a deficit precipitation started to build in April, especially in the most northern parts of the state. Impacts are not really evident yet however, as farmers are taking advantage of the dry conditions to wrap up spring planting. Corn planting neared completion across the state while cotton and peanut planting progressed strongly. Winter wheat is close to completion but was behind schedule due to the deep freezes we experienced this winter. No drought conditions were present across the state in April, with some areas showing abnormally dry conditions.

Looking ahead into summer (June, July, August), the Climate Prediction Center (CPC) forecasts northern Alabama having a 33-40% chance of experiencing above-normal seasonal average temperatures, while central and southern Alabama (excluding the Gulf counties) have a 40-50% chance of above-normal temperatures, and the Gulf counties have a 50-60% chance of above-normal temperatures. The precipitation is forecasted to be 40-50% chance above normal for counties bordering Tennessee in north Alabama, and 33-40% chance above normal for the rest of Alabama. The following tables provide the normals for Alabama and the four major metropolitan areas, relative to the reference period of 1991-2020, for each summer month.

Monthly summaries are provided by Dr. Rob Junod, Lee Ellenburg and John Christy.

Precipitation Percent of Normal April 2023




THE ALABAMA STATE
CLIMATOLOGIST
THE UNIVERSITY OF ALABAMA IN HUNTSVILLE

June				
	Mean Temperature(°F)	Average Daily High Temperature(°F)	Average Daily Low Temperature(°F)	Total Precipitation(inches)
Alabama	77.6	88.4	66.8	4.92
Birmingham	78.3	88.1	68.5	4.78
Huntsville	78.6	89.1	68.0	4.06
Mobile	80.1	89.4	70.8	6.55
Montgomery	80.2	91.5	69.0	4.08

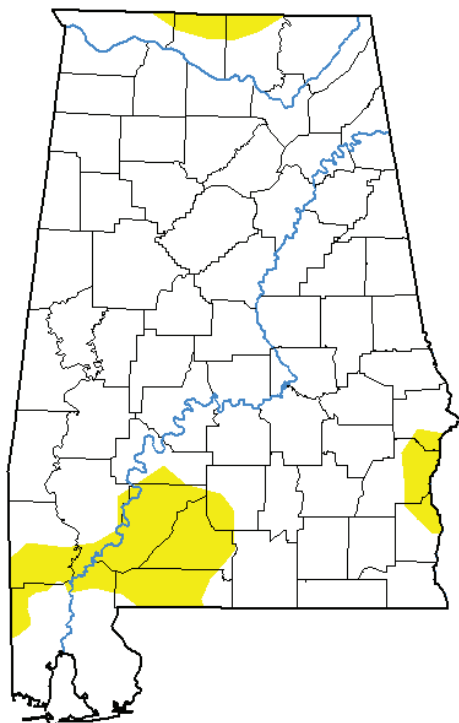
July				
	Mean Temperature(°F)	Average Daily High Temperature(°F)	Average Daily Low Temperature(°F)	Total Precipitation(inches)
Alabama	80.3	90.7	69.9	5.17
Birmingham	81.5	91.0	72.1	5.42
Huntsville	81.3	91.5	71.1	4.49
Mobile	82.0	90.9	73.1	7.69
Montgomery	82.9	93.7	72.1	5.06

August				
	Mean Temperature(°F)	Average Daily High Temperature(°F)	Average Daily Low Temperature(°F)	Total Precipitation(inches)
Alabama	79.7	90.2	69.1	4.55
Birmingham	80.9	90.6	71.3	4.35
Huntsville	80.5	91.3	69.7	3.55
Mobile	81.9	90.8	72.9	6.87
Montgomery	82.5	93.6	71.4	4.02







DROUGHT MONITOR

U.S. Drought Monitor Alabama

May 2, 2023
(Released Thursday, May. 4, 2023)
Valid 8 a.m. EDT



Intensity:

-  None
-  D0 Abnormally Dry
-  D1 Moderate Drought
-  D2 Severe Drought
-  D3 Extreme Drought
-  D4 Exceptional Drought

The Drought Monitor focuses on broad-scale conditions. Local conditions may vary. For more information on the Drought Monitor, go to <http://droughtmonitor.unl.edu/About.aspx>

Author:

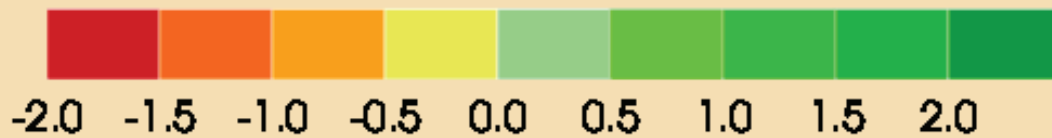
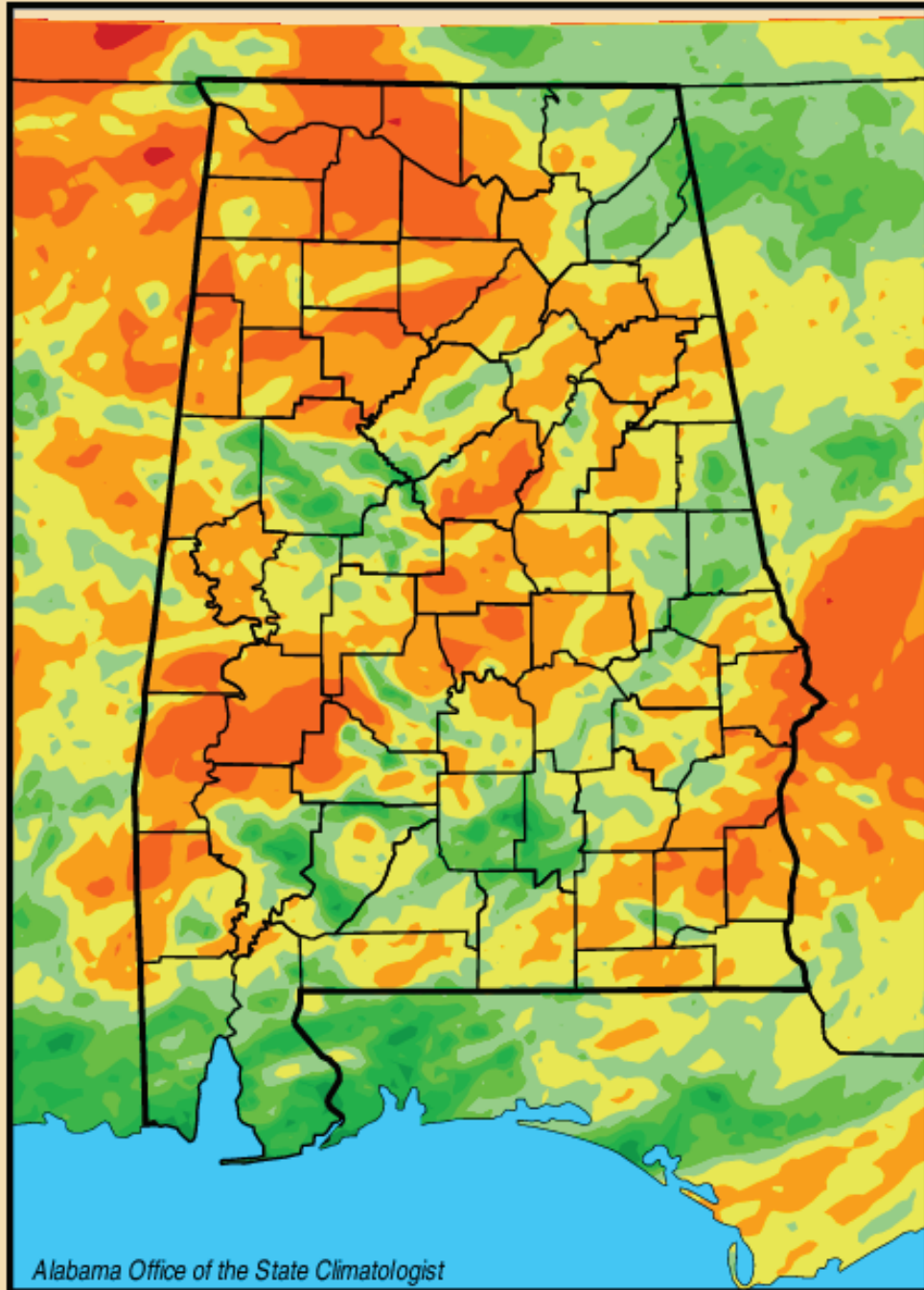
Brad Pugh
CPC/NOAA



droughtmonitor.unl.edu

LAWN AND GARDEN

Lawn-and-Garden Moisture Index
for May 10, 2023



ALABAMA MONTHLY CLIMATE SUMMARIES

Alabama Monthly Climate Summaries						
April 2023						
	Apr. Mean Apr. Norm	Apr. High Temp Record High	Apr. Low Temp Record Low	Total Precip. Normal Precip.	Wettest Apr. Driest Apr.	Heaviest Day Record Day
Anniston	62.1 62	88 4/5/23 93 4/17/55	39 4/11/23 26 4/17/1905	4.36" 4.87"	17.30" 1979 .17" 1986	1.13" 4/7/23 6.15" 4/29/63
Auburn	64.6 64	88 4/5/23 94 4/30/42	44 4/9/23 27 4/13/40	1.11" 4.92"	17.66" 1964 .50" 1915	1.11" 4/3/23 5.15" 4/8/64
Birmingham	63.6 62.6	86 4/5/23 92 4/21/87	44 4/18/23 26 4/11/73	6.87" 4.67"	13.75" 1979 .42" 1986	2.98" 4/7/23 4.61" 4/12/79
Brewton	65.1 65.3	87.1 4/4/23 95 4/30/43	40.2 4/18/23 25 4/7/50	3.31" 4.50"	11.13" 1975 .50" 1981	1.26" 4/15/23 9.60" 4/14/55
Calera	64.1 62.4	86 4/4/23 90 4/24/60	44 4/17/23 25 4/11/73	3.10" 5.15"	18.32" 1979 .10" 1925	.80" 4/8/23 5.33" 4/13/79
Clanton	62.7 62.7	85.9 4/5/23 94 4/25/25	40.4 4/17/23 26 4/13/40	3.86" 5.43"	22.00" 1979 .12" 1986	1.50" 4/3/23 9.00" 4/8/38
Courtland	59.5 M	87 4/4/23 M	37.8 4/25/23 M	5.44" M	M M	1.41" 4/21/23 M
Cullman (St. Bernard)	60 M	83.9 4/4/23 M	36.8 4/2/23 M	2.21" M	M M	.94" 4/7/23 M
Decatur (Pryor Field)	59 61.6	87 4/20/23 92 4/29/1899	37 4/25/23 26 4/6/1898	3.80" 4.50"	13.57" 1911 .58" 1930	.76" 4/7/23 4.38" 4/6/1892
Dothan	67.8 67.3	87 4/6/23 95 4/30/42	45 4/18/23 31 4/13/40	6.00" 4.11"	10.32" 1944 .54" 1967	1.67" 4/26/23 4.25" 4/6/37
Fairhope	66.4 66.9	83 4/6/23 97 4/10/23	41.9 4/18/23 29 4/13/40	5.09" 4.53"	13.53" 1980 .11" 1999	.94" 4/27/23 8.31" 4/15/96
Gadsden	62.7 61.6	87 4/4/23 94 4/30/15	40.9 4/17/23 24 4/7/52	3.50" 5.21"	12.65" 1979 .57" 1986	1.11" 4/8/23 4.60" 4/13/79
Gainesville Lock	62.7 63.3	87 4/4/23 92+ 4/28/87	40.9 4/17/23 29 4/1/87	3.50" 5.37"	18.41" 1979 .34" 1976	1.11" 4/8/23 7.55" 4/13/79
Greensboro	63.4 64.4	86.6 4/4/23 97 4/25/16	41 4/18/23 28 4/13/40	4.30" 5.33"	12.37" 1979 .59" 1987	1.06" 4/3/23 4.46" 4/5/56
Guntersville	M 59.2	M 94 4/26/86	M 25+ 4/3/92	M 4.81"	10.45" 1979 .77" 1986	M 5.01" 4/29/63
Highland Home	64.7 64.8	85.7 4/5/23 96 4/30/1906	44.4 4/9/23 24 4/4/87	6.19" 4.57"	14.00" 1964 .35" 1915	1.94" 4/3/23 7.57" 4/27/64
Huntsville	60.5 61.2	86 4/5/23 92 4/16/67	39 4/25/23 26 4/1/87	3.66" 4.86"	12.55" 1964 .42" 1986	.91" 4/7/23 3.85" 4/5/83
Mobile	68.6 67.3	88 4/6/23 94 4/21/87	43 4/17/23 32 4/5/87	8.57" 5.70"	15.43" 1980 .08" 1999	3.38" 4/12/23 6.65" 4/5/57
Montgomery	66.8 64.8	90 4/5/23 91+ 4/5/88	43 4/18/23 28 4/1/87	5.72" 4.34"	15.64" 1964 .52" 1986	1.39" 4/3/23 4.54" 4/8/64
Muscle Shoals Airport	59.2 61.5	86.2 4/4/23 92 4/30/87	37.6 4/25/23 27 4/11/89	4.00" 4.43"	12.81" 1983 .36" 1986	1.00" 4/21/23 5.34" 4/5/83
Russellville	58.4 58	86.2 4/4/23 89+ 4/11/01	33 4/25/23 22 4/11/73	6.21" 4.97"	14.00" 1991 .57" 1986	1.08" 4/21/23 3.85" 4/6/83
Scottsboro	58.9 58.7	87.5 4/5/23 92 4/30/43	35.3 4/25/23 23+ 4/3/92	4.44" 4.52"	9.57" 2000 1.22" 1976	.89" 4/8/23 3.72" 4/29/63
Selma	63.7 63.5	87.3 4/4/23 93+ 4/22/87	39.5 4/18/23 29 4/13/40	5.07" 4.33"	10.02" 1973 .22" 1986	1.46" 4/3/23 8.74" 4/8/38
Talladega	61.9 59.8	87.3 4/5/23 92 4/18/55	38.2 4/11/23 24+ 4/3/92	4.10" 4.80"	18.27" 1979 .35" 1986	1.50" 4/8/23 5.72" 4/4/74
Thomasville	63.2 64.1	86.1 4/4/23 94 4/22/87	39.5 4/18/23 27 4/13/40	5.88" 4.64"	12.02" 1979 .49" 1987	2.43" 4/3/23 5.47" 4/3/79
Troy	64.4 63.4	86.2 4/4/23 94 4/30/42	39.5 4/18/23 29 4/13/40	6.02" 4.25"	8.41" 1979 .73" 1986	2.26" 4/3/23 4.52" 4/15/34
Tuscaloosa	63.6 63.9	87 5/4/23 94 4/21/87	41 4/18/23 29 4/1/87	5.71" 5.10"	14.41" 1979 .30" 1987	2.71" 4/7/23 6.44" 4/12/79
Valley Head	58.4 55.9	86.3 4/5/23 88+ 4/27/86	33.9 4/25/23 19 4/3/92	6.07" 4.73"	10.08" 1979 1.10" 1976	1.65" 4/27/23 4.18" 4/30/63

NEW ALABAMA CLIMATE RECORDS

Highest Minimum Temperature Monthly Record						
STATION	DATE	RECORD	PREV. DATE	PREV. RECORD	NUMBER OF YEARS	DIFFERENCE
DEMOPOLIS LOCK AND DAM, AL US	4/1/23	72	4/29/91	72	71	0
Highest Maximum Temperature Daily Record						
MOBILE DOWNTOWN AIRPORT, AL US	4/1/23	87	4/1/17	84	74	3
MOBILE REGIONAL AIRPORT, AL US	4/1/23	87	4/1/17	86	75	1
ATMORE, AL US	4/2/23	85	4/2/17	85	83	0
JACKSON, AL US	4/2/23	86	4/2/12	86	39	0
ATHENS, AL US	4/4/23	86	4/4/17	82	31	4
DAUPHIN ISLAND NUMBER 2, AL US	4/4/23	83	4/4/15	80	47	3
GADSDEN, AL US	4/4/23	86	4/4/86	86	70	0
MONTGOMERY AIRPORT, AL US	4/4/23	89	4/4/11	86	75	3
MUSCLE SHOALS AIRPORT, AL US	4/4/23	89	4/4/12	86	82	3
TUSCALOOSA AIRPORT ASOS, AL US	4/4/23	87	4/4/86	86	75	1
BANKHEAD LOCK AND DAM, AL US	4/5/23	86	4/5/86	86	66	0
BELLE MINA 2 N, AL US	4/5/23	84	4/5/12	83	73	1
BREWTON 3 ENE, AL US	4/5/23	88	4/5/88	86	46	2
CLANTON, AL US	4/5/23	88	4/5/34	88	129	0
DAUPHIN ISLAND NUMBER 2, AL US	4/5/23	80	4/5/22	80	47	0
GAINESVILLE LOCK, AL US	4/5/23	87	4/5/86	87	65	0
JACKSON, AL US	4/5/23	87	4/5/15	87	39	0
MARION JUNCTION 2 NE, AL US	4/5/23	88	4/5/67	86	73	2
ONEONTA, AL US	4/5/23	86	4/5/69	85	128	1
SELMA, AL US	4/5/23	90	4/5/88	90	126	0
VERNON, AL US	4/5/23	89	4/5/67	89	66	0
ANNISTON METROPOLITAN AIRPORT, AL US	4/5/23	88	4/5/99	88	120	0
CLANTON, AL US	4/6/23	88	4/6/10	88	129	0
GADSDEN, AL US	4/6/23	88	4/6/10	87	70	1
HEFLIN, AL US	4/6/23	87	4/6/10	87	67	0
SCOTTSBORO, AL US	4/6/23	90	4/6/10	86	131	4
MOBILE REGIONAL AIRPORT, AL US	4/6/23	88	4/6/67	86	75	2
MONTGOMERY AIRPORT, AL US	4/6/23	87	4/6/10	87	75	0
BREWTON 3 ENE, AL US	4/7/23	86	4/7/22	85	46	1
JACKSON, AL US	4/7/23	87	4/7/99	86	39	1
DAUPHIN ISLAND NUMBER 2, AL US	4/8/23	82	4/8/15	80	47	2

NEW ALABAMA CLIMATE RECORDS

Highest Minimum Temperature Daily Record						
DEMOPOLIS LOCK AND DAM, AL US	4/1/23	72	4/1/53	64	71	8
GUNTERSVILLE, AL US	4/1/23	61	4/1/16	61	113	0
THORSBY EXPERIMENTAL STATION, AL US	4/1/23	65	4/1/07	64	65	1
DOTHAN REGIONAL AIRPORT, AL US	4/1/23	66	4/1/74	66	53	0
ATMORE, AL US	4/4/23	69	4/4/45	68	83	1
BAY MINETTE, AL US	4/4/23	70	4/4/77	69	108	1
BESSEMER 3 WSW, AL US	4/4/23	64	4/4/81	64	46	0
DAUPHIN ISLAND NUMBER 2, AL US	4/4/23	72	4/4/11	72	47	0
HUNTSVILLE INTNL AIRPORT, AL US	4/4/23	63	4/4/03	63	64	0
MOBILE DOWNTOWN AIRPORT, AL US	4/4/23	72	4/4/99	69	74	3
DOTHAN REGIONAL AIRPORT, AL US	4/4/23	68	4/4/08	67	53	1
BIRMINGHAM AIRPORT, AL US	4/4/23	66	4/4/81	62	93	4
MOBILE REGIONAL AIRPORT, AL US	4/4/23	73	4/4/68	71	75	2
MONTGOMERY AIRPORT, AL US	4/4/23	66	4/4/12	64	75	2
MUSCLE SHOALS AIRPORT, AL US	4/4/23	66	4/4/03	63	82	3
TUSCALOOSA AIRPORT ASOS, AL US	4/4/23	67	4/4/58	63	75	4
ATHENS, AL US	4/5/23	62	4/5/97	62	31	0
BANKHEAD LOCK AND DAM, AL US	4/5/23	65	4/5/12	61	66	4
BELLE MINA 2 N, AL US	4/5/23	62	4/5/69	61	73	1
BESSEMER 3 WSW, AL US	4/5/23	67	4/5/97	62	46	5
BREWTON 3 ENE, AL US	4/5/23	66	4/5/08	63	46	3
CLAYTON, AL US	4/5/23	64	4/5/69	63	67	1
DAUPHIN ISLAND NUMBER 2, AL US	4/5/23	72	4/5/22	70	47	2
GAINESVILLE LOCK, AL US	4/5/23	66	4/5/03	63	65	3
GUNTERSVILLE, AL US	4/5/23	62	4/5/03	62	113	0
HALEYVILLE, AL US	4/5/23	63	4/5/69	63	120	0
HAMILTON, AL US	4/5/23	67	4/5/03	58	61	9
HEFLIN, AL US	4/5/23	62	4/5/12	59	67	3
JACKSON, AL US	4/5/23	68	4/5/99	68	39	0
MARION JUNCTION 2 NE, AL US	4/5/23	66	4/5/69	66	73	0
MOULTON 2, AL US	4/5/23	66	4/5/69	63	66	3
ONEONTA, AL US	4/5/23	65	1897-04-05	64	128	1
OPELIKA, AL US	4/5/23	60	4/5/69	60	66	0
SYLACAUGA 4 NE, AL US	4/5/23	65	4/5/69	61	68	4
VERNON, AL US	4/5/23	70	4/5/69	63	66	7
HUNTSVILLE INTNL AIRPORT, AL US	4/5/23	64	4/5/97	63	64	1
MOBILE DOWNTOWN AIRPORT, AL US	4/5/23	71	4/5/56	70	74	1
ANNISTON METROPOLITAN AIRPORT, AL US	4/5/23	64	4/5/97	63	120	1
BIRMINGHAM AIRPORT, AL US	4/5/23	68	4/5/69	64	93	4
MOBILE REGIONAL AIRPORT, AL US	4/5/23	71	4/5/56	69	75	2
MUSCLE SHOALS AIRPORT, AL US	4/5/23	64	4/5/47	62	82	2
BANKHEAD LOCK AND DAM, AL US	4/6/23	64	4/6/64	63	66	1
BESSEMER 3 WSW, AL US	4/6/23	61	4/6/01	61	46	0
GADSDEN, AL US	4/6/23	64	4/6/54	63	70	1
OPELIKA, AL US	4/6/23	59	4/6/19	59	66	0
CLAYTON, AL US	4/7/23	65	4/7/19	65	67	0
OPELIKA, AL US	4/7/23	62	4/7/19	61	66	1

NEW ALABAMA CLIMATE RECORDS

Lowest Maximum Temperature Daily Record						
TUSCALOOSA AIRPORT ASOS, AL US	4/8/23	58	4/8/07	58	75	0
CLAYTON, AL US	4/9/23	53	4/9/82	59	67	-6
HEFLIN, AL US	4/9/23	48	4/9/07	53	67	-5
MARION JUNCTION 2 NE, AL US	4/9/23	56	4/9/07	56	73	0
OPELIKA, AL US	4/9/23	50	4/9/07	55	66	-5
SYLACAUGA 4 NE, AL US	4/9/23	55	4/9/07	55	68	0
DOTHAN REGIONAL AIRPORT, AL US	4/9/23	60	4/9/03	61	53	-1
ATHENS, AL US	4/23/23	53	4/23/05	59	31	-6
GADSDEN, AL US	4/23/23	63	4/23/91	63	70	0
MUSCLE SHOALS AIRPORT, AL US	4/23/23	54	4/23/84	54	82	0
BELLE MINA 2 N, AL US	4/24/23	53	4/24/84	55	73	-2
MOULTON 2, AL US	4/24/23	52	4/24/17	55	66	-3
GADSDEN, AL US	4/26/23	61	4/26/02	61	70	0
Highest Precipitation Daily Record						
BESSEMER 3 WSW, AL US	4/8/23	2.8	4/8/83	1.75	46	1.05
BOAZ, AL US	4/8/23	1.77	4/8/64	1.75	85	0.02
HOLT LOCK AND DAM, AL US	4/8/23	1.25	4/8/92	0.95	42	0.3
JASPER, AL US	4/8/23	0.98	4/8/64	0.91	62	0.07
WALNUT GROVE, AL US	4/8/23	1.99	4/8/73	1.74	82	0.25
BIRMINGHAM AIRPORT, AL US	4/8/23	2.86	4/8/38	1.77	93	1.09
TUSCALOOSA AIRPORT ASOS, AL US	4/8/23	2.45	4/8/84	1.56	75	0.89
BEVILL LOCK AND DAM, AL US	4/9/23	1.38	4/9/98	1.18	43	0.2
CHILDERSBURG WATER PLANT, AL US	4/9/23	1.68	4/9/98	1.06	66	0.62
ATMORE, AL US	4/16/23	1.53	4/16/11	1.07	83	0.46
DAUPHIN ISLAND NUMBER 2, AL US	4/16/23	0.84	4/16/01	0.8	47	0.04
MOBILE DOWNTOWN AIRPORT, AL US	4/16/23	1.41	4/16/51	1.09	74	0.32
HANCEVILLE, AL US	4/27/23	1.46	4/27/11	1.21	37	0.25
DOTHAN REGIONAL AIRPORT, AL US	4/27/23	1.65	4/27/97	1.46	53	0.19
DAUPHIN ISLAND NUMBER 2, AL US	4/28/23	1.85	4/28/90	1.51	47	0.34
GENEVA NUMBER 2, AL US	4/28/23	1.93	4/28/97	1.67	47	0.26
BESSEMER 3 WSW, AL US	4/30/23	1.7	4/30/02	1.2	46	0.5
DADEVILLE 2, AL US	4/30/23	2.55	4/30/04	2	74	0.55
HEFLIN, AL US	4/30/23	1.72	4/30/05	1.24	67	0.48
HOLT LOCK AND DAM, AL US	4/30/23	1.04	4/30/91	1.02	42	0.02

CoCoRAHS

Community Collaborative Rain, Hail and Snow Network (CoCoRAHS)								
January 2022								
	Ave. Total Precip.	#Stations			Ave. Total Precip.	#Stations		
Autauga	2.41	2	Houston		5.24	2	Normal January Precipitation*	
Baldwin	2.43	31	Jackson		5.41	5	Abbeville	5.30
Barbour	4.04	1	Jefferson		4.33	20	Alberta	4.84
Bibb	n.a.	0	Lamar		1.20	1	Alex City	5.69
Blount	3.63	4	Lauderdale		5.33	12	Aliceville	5.30
Bullock	n.a.	0	Lawrence		5.47	4	Andalusia	5.17
Butler	3.31	1	Lee		4.34	5	Ashland	5.48
Calhoun	4.40	2	Limestone		6.13	8	Athens	6.06
Chambers	n.a.	0	Lowndes		n.a.	0	Bay Minette	5.43
Cherokee	n.a.	0	Macon		2.32	1	Bessemer	5.34
Chilton	5.46	1	Madison		6.20	23	Billingsly	4.98
Choctaw	3.11	1	Marengo		n.a.	0	Centreville WSMO	5.63
Clarke	5.28	3	Marion		4.99	1	Chatom	5.45
Clay	5.13	1	Marshall		5.25	11	Claiborne L&D	5.49
Cleburne	n.a.	0	Mobile		2.67	21	Clayton	4.91
Coffee	n.a.	0	Monroe		3.93	3	Dauphin Isl.	5.86
Colbert	6.34	6	Montgomery		5.61	4	Elba	5.08
Conecuh	n.a.	0	Morgan		5.54	6	Eufaula WR	5.20
Coosa	6.13	1	Perry		n.a.	0	Evergreen	5.55
Covington	3.29	1	Pickens		1.15	1	Fayette	5.75
Crenshaw	n.a.	0	Pike		n.a.	0	Geneva 2	6.43
Cullman	3.56	4	Randolph		3.22	1	Greenville	4.98
Dale	n.a.	0	Russell		2.40	2	Haleyville	5.79
Dallas	4.90	1	St. Clair		4.12	6	Hamilton 3S	5.31
DeKalb	5.33	7	Shelby		4.44	15	Heflin	5.31
Elmore	5.92	4	Sumter		n.a.	0	Hurtsboro	4.89
Escambia	3.58	1	Talladega		4.11	4	Jasper	5.71
Etowah	3.36	3	Tallapoosa		4.11	1	Lafayette	5.19
Fayette	n.a.	0	Tuscaloosa		4.74	5	Livingston	4.77
Franklin	n.a.	0	Walker		5.17	1	Melvin	5.25
Geneva	n.a.	0	Washington		4.79	1	Milstead	4.85
Greene	n.a.	0	Wilcox		6.83	2	Moulton	5.03
Hale	n.a.	0	Winston		4.75	2	Oneonta	5.39
Henry	n.a.	0					Perryville	5.00
							Plantersville	5.26
							Rock Mills	5.39
							Rockford	5.54
							Sylacauga	5.14
							Union Springs	4.77
							Uniontown	4.99
							Vernon	5.95
							Warrior L&D	5.34
							Wetumpka	4.87



Alabama State Climatologist

John R. Christy

Alabama State Climatologist

The University of Alabama

in Huntsville

christy@nsstc.uah.edu

256-961-7763

Assistant State Climatologist

Robert Junod

The University of Alabama in Huntsville

rjunod@nsstc.uah.edu

256-961-7743

Associate State Climatologist

Lee Ellenburg

The University of Alabama in Huntsville

wle00001@uah.edu

256-961-7498

For questions, please contact:

alabama.climate@nsstc.uah.edu

<http://nsstc.uah.edu/alclimatereport>