

The
Alabama
Climate Report

Brought to you by the Office of the Alabama Climatologist

AUGUST 2022



Volume 14, Number 4 :: AUGUST 2022



Statewide, August's weather was slightly cooler and a little wetter than usual. Relative to the 20th century average, the temperature averaged 0.2°F below the normal of 79.3°F and precipitation was 1.92 inches above the normal of 4.34 inches.

Temperature-wise, the first and last week of the month were generally warmer than normal while the state enjoyed unseasonably cooler temperatures during the middle of the month. The cooler temperatures also provided relief from the oppressive humidity which Alabama has experienced all summer long. The coldest daily extreme of the month was recorded in stations at Talladega, Childersburg, Guntersville, Crossville, and Russellville at 60°F. On the other hand, the hottest daily extreme was recorded in Andalusia-Opp airport at 101°F on the 15th and 16th, which was the only Alabama station to record a temperature 100°F or greater this August.

While the statewide average rainfall was 6.26 inches, the sporadic distribution of wet and dry stations this summer continued this month. The wettest locations were generally located around the Montgomery and Mobile metropolitan areas with the station in Loxely recording the most rainfall this month at a remarkable 19.42 inches. The driest locations were generally situated around the Birmingham and Huntsville metropolitan areas with a station at the Talladega airport recording only 0.88 inches of rainfall, the least amount of rainfall for the entire month of August.

With the conclusion of climatological summer (June, July, August), let's look back at how Alabama fared this summer. Statewide, this summer was the 21st warmest summer on record, with an average temperature of 80.2°F, which is 1.3°F warmer than normal. Precipitation-wise, this summer was the 45th wettest summer on record, with 15.38 inches of precipitation, which is 1.31 inches wetter than normal. Looking ahead into fall, the Climate Prediction Center (CPC) forecasts Alabama as 40-50% chance for above normal seasonal average temperatures. The precipitation is a bit varied with forecasts for equal chances in the southern half, and 33-40% chance below normal in the northern half of Alabama. The following tables provide the normals for Alabama and the four major metropolitan areas relative to the 1991-2020 reference period for each fall month.

Monthly summaries are provided by Drs. Rob Junod and John Christy.

September				
	Mean Temperature(°F)	Average Daily High Temperature(°F)	Average Daily Low Temperature(°F)	Total Precipitation(inches)
Alabama	74.8	86.0	63.6	4.07
Birmingham	75.6	85.9	65.3	4.00
Huntsville	74.9	86.5	63.4	3.49
Mobile	78.1	87.5	68.8	5.30
Montgomery	77.8	89.3	66.3	3.69

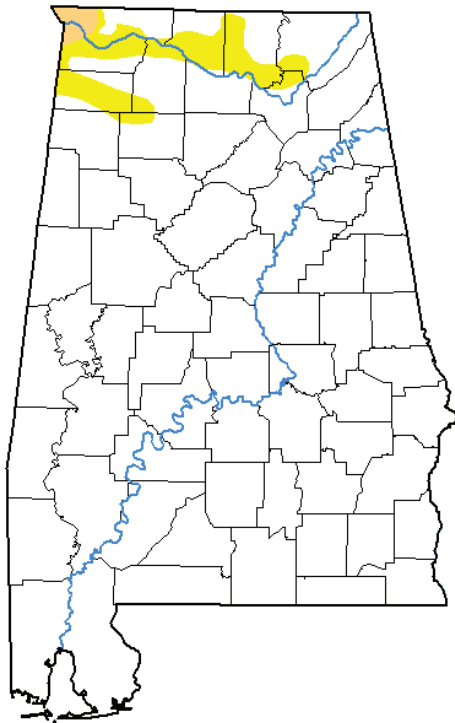
October				
	Mean Temperature(°F)	Average Daily High Temperature(°F)	Average Daily Low Temperature(°F)	Total Precipitation(inches)
Alabama	64.5	76.7	52.2	3.50
Birmingham	64.9	76.0	53.9	3.34
Huntsville	63.9	76.0	51.8	3.56
Mobile	69.0	79.7	58.2	3.95
Montgomery	67.4	80.2	54.5	2.87

November				
	Mean Temperature(°F)	Average Daily High Temperature(°F)	Average Daily Low Temperature(°F)	Total Precipitation(inches)
Alabama	53.9	66.2	41.6	4.29
Birmingham	54.0	65.0	43.0	4.23
Huntsville	52.5	63.9	41.2	4.25
Mobile	58.9	70.2	47.7	4.60
Montgomery	56.6	69.8	43.3	3.85







DROUGHT MONITOR

U.S. Drought Monitor Alabama

August 30, 2022
(Released Thursday, Sep. 1, 2022)
Valid 8 a.m. EDT



Intensity:

-  None
-  D0 Abnormally Dry
-  D1 Moderate Drought
-  D2 Severe Drought
-  D3 Extreme Drought
-  D4 Exceptional Drought

The Drought Monitor focuses on broad-scale conditions. Local conditions may vary. For more information on the Drought Monitor, go to <https://droughtmonitor.unl.edu/About.aspx>

Author:

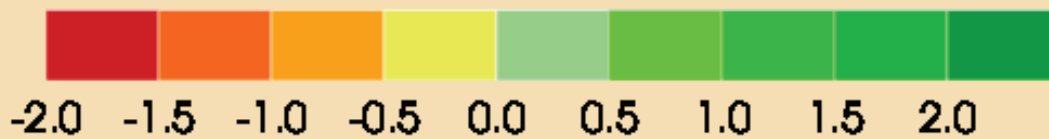
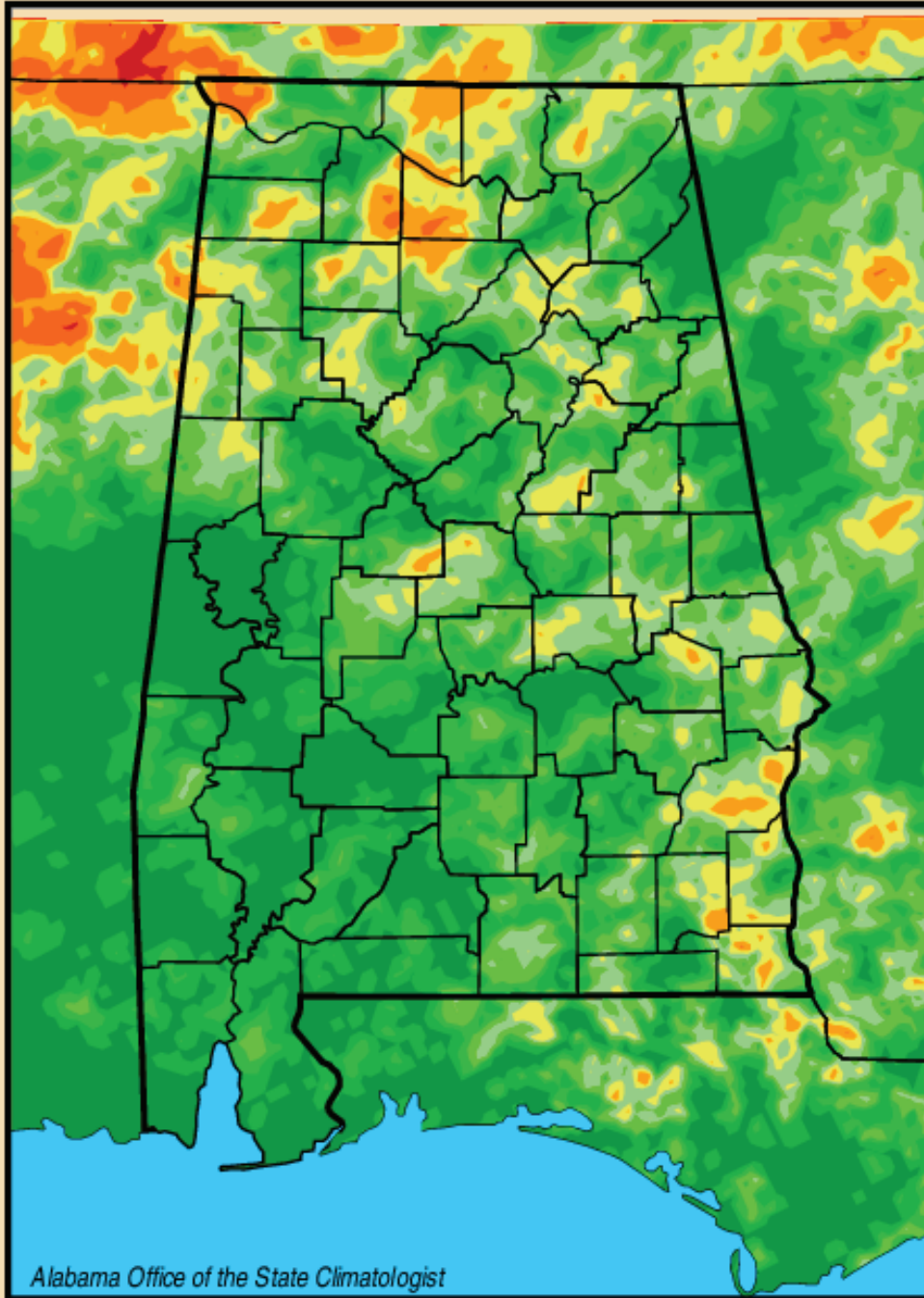
Deborah Bathke
National Drought Mitigation Center



droughtmonitor.unl.edu

LAWN AND GARDEN

Lawn-and-Garden Moisture Index
for September 5, 2022



ALABAMA MONTHLY CLIMATE SUMMARIES

Alabama Monthly Climate Summaries

August 2022

	Aug. Mean Aug. Norm	Aug. High Temp Record High	Aug. Low Temp Record Low	Total Precip. Normal Precip.	Wettest Aug. Driest Aug.	Heaviest Aug. Record Aug.
Anniston	79.4	94 8/6/22	66 8/13/22	1.24"	7.54" 1974	.50" 8/7/22
	79.5	106 8/21/83	50 8/28/52	3.35"	.50" 1983	5.57" 8/24/67
Auburn	79.1	94 8/6/22	67 8/13/22	4.14"	11.03" 1944	1.25" 8/8/22
	79.7	106 8/20/25	54 8/29/68	4.29"	.01" 1925	3.73" 8/17/39
Birmingham	79.9	93 8/15/22	67 8/13/22	3.04"	8.98" 1998	1.37" 8/7/22
	79.6	104 8/8/35	51 8/31/46	3.48"	.38" 1989	4.15" 8/2/41
Brewton	77.1	94.2 8/16/22	69 8/22/22	9.24"	14.69" 1977	1.67" 8/24/22
	79.7	104+ 8/13/54	53+ 8/30/68	5.64"	1.67" 1980	7.20" 8/4/95
Calera	79.8	93 8/7/22	69 8/13/22	5.00"	15.00" 1939	1.25" 8/7/22
	78.4	102 8/10/56	50 8/26/66	4.23"	.33" 1998	5.70" 8/26/08
Clanton	76.8	93.7 8/15/22	65.8 8/31/22	3.02"	7.98" 1974	.64" 8/22/22
	78.3	105 8/8/35	51 8/24/57	3.73"	.45" 1990	6.75" 8/26/70
Courtland	76.8	93.7 8/15/22	65.8 8/31/22	3.02"	M	.64" 8/22/22
	M	M	M	M	M	M
Cullman (St. Bernard)	75.9	93.5 8/6/22	60.8 8/13/22	3.87"	M	2.30" 8/19/22
	M	M	M	M	M	M
Decatur (Pryor Field)	78.6	95 8/27/22	62 8/18/22	.51"	11.93" 1919	8/7/22
	79.8	107 8/1/35	52 8/26/17	3.61"	.00" 1962	3.95" 8/22/60
Dothan	81.5	97 8/5/22	70 8/15/22	4.28"	20.85" 1939	1.08" 8/7/22
	81.2	103 8/26/38	43 8/24/1902	4.81"	1.47" 1958	4.80" 8/10/31
Fairhope	78.2	93.2 8/16/22	70.3 8/27/22	13.82"	14.23" 1984	6.16" 8/18/22
	81.1	102 8/30/00	60+ 8/30/92	6.22"	1.25" 1997	5.74" 8/2/84
Gadsden	74.5	88.7 8/5/22	60.4 8/13/22	3.69"	9.52" 1992	1.15" 8/20/22
	78.9	105 8/16/54	52+ 8/12/67	3.65"	.10" 1983	3.32" 8/6/60
Gainesville Lock	78.4	95.1 8/15/22	68.7 8/13/22	8.11"	8.11" 1992	2.22" 8/24/22
	80.3	103+ 8/30/00	55 8/30/86	2.91"	.37" 1990	4.12" 8/10/70
Greensboro	77.5	93.9 8/6/22	69.5 8/31/22	7.70"	7.01" 1993	1.88" 8/24/22
	81.3	107 8/26/43	55 8/22/56	3.30"	1.16" 1989	4.22" 8/31/61
Guntersville	M	M	M	M	10.33" 1981	M
	78.2	105 8/21/83	48 8/29/92	3.36"	.33" 1990	5.76" 8/30/81
Highland Home	76.7	91.3 8/6/22	68.8 8/28/22	8.69"	8.28" 1984	2.06" 8/20/22
	79	103 8/9/54	56 8/29/92	4.30"	.89" 1997	3.65" 8/12/86
Huntsville	79.8	95 8/6/22	64 8/13/22	2.76"	9.81" 1986	1.17" 8/6/22
	78.9	108 8/8/30	50 8/10/1954	3.42"	.58" 1998	4.29" 8/10/86
Mobile	81.8	97 8/16/22	72 8/27/22	11.08"	15.19" 1984	2.24" 8/24/22
	81.3	105 8/29/2000	57 8/25/1891	6.20"	1.04" 1997	5.65" 8/1/84
Montgomery	81.7	97 8/6/22	71 8/28/22	10.24"	10.43" 1984	4.00" 8/24/22
	81.2	104+ 8/24/83	56 8/29/92	3.63"	.73" 1997	5.38" 8/2/84
Muscle Shoals Airport	80.2	98 8/29/22	63 8/14/22	2.55"	6.78" 1979	0.63" 8/8/22
	79.1	105+ 8/16/54	53+ 8/29/92	2.96"	.15" 1990	3.43" 8/25/76
Russellville	75.3	91.7 8/29/22	59.7 8/31/22	2.82"	6.83" 1997	1.63" 8/11/22
	77	103+ 8/30/00	46+ 8/29/67	2.97"	.07" 1999	3.69" 8/16/85
Scottsboro	75.7	92 8/6/22	61.2 8/18/22	3.65"	7.70" 1985	2.17" 8/10/22
	77.7	105+ 8/16/54	46 8/23/82	3.43"	.74" 1999	4.39" 8/11/01
Selma	77.5	93.7 8/15/22	66.1 8/31/22	7.03"	8.84" 1984	1.67" 8/24/22
	81	105+ 8/30/54	57+ 8/30/92	4.01"	.71" 1990	5.35" 8/15/39
Talladega	77.7	93.3 8/15/22	64.2 8/31/22	.88"	9.11" 1984	.35" 8/20/22
	77.3	103 8/16/54	46 8/23/50	3.52"	.60" 1999	4.30" 8/11/82
Thomasville	76.5	92.2 8/6/22	68.4 8/11/22	6.63"	9.01" 1996	2.43" 8/24/22
	80.9	105+ 8/31/54	53 8/22/56	3.88"	1.02" 1989	6.05" 8/14/39
Troy	82.3	97 8/7/22	70 8/15/22	4.20"	8.38" 1996	1.35" 8/24/22
	80.2	106 8/28/54	55 8/31/46	3.56"	.55" 1989	6.75" 8/31/61
Tuscaloosa	80.8	95 8/15/22	2.19" 8/20/22	4.53"	8.84" 1970	2.19" 8/20/22
	81.2	107 8/10/07	53 8/22/56	3.80"	.57" 1953	2.87" 8/10/67
Valley Head	74.4	90.1 8/6/22	61.1 8/31/22	4.79"	6.68" 1981	1.20" 8/20/22
	75.3	105 8/16/54	46 8/13/64	3.49"	.58" 1983	3.61" 8/4/84

NEW ALABAMA CLIMATE RECORDS

No monthly records were set in August 2022							
Highest Minimum Temperature Daily Record							
STATION	DATE	RECORD	PREV. DATE	PREV. RECORD	NUMBER OF YEARS	DIFFERENCE	
DAUPHIN ISLAND NUMBER 2, AL US	8/1/22	84	8/1/98	84	46	0	
MOBILE DOWNTOWN AIRPORT, AL US	8/5/22	80	8/5/53	78	73	2	
HALEYVILLE, AL US	8/7/22	75	8/7/10	75	119	0	
HAMILTON, AL US	8/7/22	74	8/7/16	71	60	3	
CLAYTON, AL US	8/17/22	74	8/17/10	74	66	0	
HAMILTON, AL US	8/24/22	71	8/24/19	71	60	0	
Lowest Maximum Temperature Daily Record							
GREENSBORO, AL US	8/18/22	76	8/18/13	77	130	-1	
VERNON, AL US	8/18/22	78	8/18/13	81	65	-3	
CLAYTON, AL US	8/19/22	81	8/19/76	83	66	-2	
ENTERPRISE 4 W, AL US	8/19/22	77	8/19/13	81	56	-4	
GENEVA NUMBER 2, AL US	8/19/22	79	8/19/13	81	46	-2	
BANKHEAD LOCK AND DAM, AL US	8/23/22	77	8/23/60	81	65	-4	
JACKSON, AL US	8/23/22	83	8/23/97	85	38	-2	
VERNON, AL US	8/23/22	81	8/23/04	82	65	-1	
BESSEMER 3 WSW, AL US	8/24/22	77	8/24/09	82	45	-5	
GREENSBORO, AL US	8/24/22	79	8/24/61	79	130	0	
ONEONTA, AL US	8/24/22	77	8/24/69	79	127	-2	
TUSCALOOSA AIRPORT ASOS, AL US	8/24/22	76	8/24/67	81	74	-5	
BANKHEAD LOCK AND DAM, AL US	8/25/22	79	8/25/66	82	65	-3	
GAINESVILLE LOCK, AL US	8/25/22	72	8/25/99	81	64	-9	
GREENSBORO, AL US	8/25/22	72	8/25/23	80	130	-8	
HAMILTON, AL US	8/25/22	79	8/25/66	81	60	-2	
HEFLIN, AL US	8/25/22	79	8/25/67	80	66	-1	
MARION JUNCTION 2 NE, AL US	8/25/22	73	8/25/61	78	72	-5	
SYLACAUGA 4 NE, AL US	8/25/22	80	8/25/61	80	67	0	
MOBILE DOWNTOWN AIRPORT, AL US	8/25/22	79	8/25/61	80	73	-1	
MOBILE REGIONAL AIRPORT, AL US	8/25/22	77	8/25/67	80	74	-3	
ATMORE, AL US	8/26/22	78	8/26/61	80	82	-2	
BAY MINETTE, AL US	8/26/22	75	8/26/18	78	107	-3	
BREWTON 3 ENE, AL US	8/26/22	77	8/26/08	83	45	-6	
CLAYTON, AL US	8/26/22	80	8/26/19	80	66	0	
DAUPHIN ISLAND NUMBER 2, AL US	8/26/22	82	8/26/13	82	46	0	
GREENSBORO, AL US	8/26/22	78	8/26/67	79	130	-1	
JACKSON, AL US	8/26/22	78	8/26/08	82	38	-4	
MARION JUNCTION 2 NE, AL US	8/26/22	77	8/26/08	78	72	-1	
OPELIKA, AL US	8/26/22	75	8/26/19	77	65	-2	
DAUPHIN ISLAND NUMBER 2, AL US	8/27/22	82	8/27/85	82	46	0	

NEW ALABAMA CLIMATE RECORDS

Lowest Minimum Temperature Daily Record						
DAUPHIN ISLAND NUMBER 2, AL US	8/26/22	73	8/26/94	73	46	0
GENEVA NUMBER 2, AL US	8/29/22	57	8/29/92	59	46	-2

Highest Precipitation Daily Record						
STATION	DATE	RECORD	PREV. DATE	PREV. RECORD	NUMBER OF YEARS	DIFFERENCE
DAUPHIN ISLAND NUMBER 2, AL US	8/3/22	2.9	8/3/84	1.45	46	1.45
HOLT LOCK AND DAM, AL US	8/3/22	1.4	8/3/87	1.39	41	0.01
VERNON, AL US	8/3/22	1.34	8/3/67	0.53	84	0.81
DAUPHIN ISLAND NUMBER 2, AL US	8/4/22	2.15	8/4/95	1.74	46	0.41
MOULTON 2, AL US	8/7/22	2.39	8/7/59	1.25	65	1.14
CLAYTON, AL US	8/8/22	1.7	8/8/93	1.4	93	0.3
RUSSELLVILLE NUMBER 2, AL US	8/8/22	1.49	8/8/55	1.04	68	0.45
BOAZ, AL US	8/10/22	1.84	8/10/01	1.77	84	0.07
FAIRHOPE 2 NE, AL US	8/18/22	4.35	8/18/69	3.55	104	0.8
MOBILE DOWNTOWN AIRPORT, AL US	8/18/22	4.1	8/18/13	3.73	73	0.37
HOLT LOCK AND DAM, AL US	8/20/22	1.49	8/20/10	0.8	41	0.69
TUSCALOOSA AIRPORT ASOS, AL US	8/20/22	2.19	8/20/09	1.83	74	0.36
BANKHEAD LOCK AND DAM, AL US	8/21/22	1.71	8/21/04	0.96	65	0.75
OPELIKA, AL US	8/21/22	2	8/21/88	1.74	65	0.26
SELMA, AL US	8/21/22	2.15	8/21/21	1.96	127	0.19
BEVILL LOCK AND DAM, AL US	8/23/22	0.68	8/23/04	0.55	42	0.13
CALERA, AL US	8/23/22	2.24	8/23/61	1.62	121	0.62
GAINESVILLE LOCK, AL US	8/24/22	1.89	8/24/48	1.2	74	0.69
GAINESVILLE LOCK, AL US	8/25/22	1.83	8/25/79	1.71	74	0.12
SELMA, AL US	8/25/22	1.61	8/25/39	1.51	127	0.1
MONTGOMERY AIRPORT, AL US	8/25/22	2.82	8/25/19	2.51	74	0.31
DEMOPOLIS LOCK AND DAM, AL US	8/26/22	2.8	8/26/19	2.73	70	0.07
GENEVA NUMBER 2, AL US	8/28/22	2.03	8/28/09	1	46	1.03
BILLINGSLEY, AL US	8/30/22	1.46	8/30/01	0.8	83	0.66

CoCoRAHS

Community Collaborative Rain, Hail and Snow Network (CoCoRAHS)								
August 2022								
	Ave. Total Precip.	# Stations			Ave. Total Precip.	# Stations	Normal August Precipitation*	
Autauga	3.64	2		Houston	2.32	2	Abbeville	4.63
Baldwin	13.72	34		Jackson	4.60	6	Alberta	4.22
Barbour	7.17	1		Jefferson	3.63	20	Alex City	4.50
Bibb	n.a.	0		Lamar	7.83	1	Aliceville	3.57
Blount	5.24	4		Lauderdale	4.07	9	Andalusia	5.65
Bullock	n.a.	0		Lawrence	2.70	5	Ashland	4.47
Butler	6.18	1		Lee	4.28	6	Athens	3.39
Calhoun	4.41	2		Limestone	3.83	10	Bay Minette	6.44
Chambers	n.a.	0		Lowndes	n.a.	0	Bessemer	3.72
Cherokee	n.a.	0		Macon	n.a.	0	Billingsly	4.16
Chilton	5.78	1		Madison	4.79	22	Centreville WSMC	5.02
Choctaw	7.84	1		Marengo	n.a.	0	Chatom	4.69
Clarke	10.05	3		Marion	4.98	1	Claiborne L&D	4.09
Clay	3.16	1		Marshall	5.67	10	Clayton	4.10
Cleburne	n.a.	0		Mobile	13.66	23	Dauphin Isl.	7.19
Coffee	n.a.	0		Monroe	10.83	3	Elba	4.49
Colbert	3.90	6		Montgomery	10.58	4	Eufaula WR	3.57
Conecuh	n.a.	0		Morgan	3.60	7	Evergreen	5.07
Coosa	n.a.	0		Perry	n.a.	0	Fayette	3.84
Covington	7.67	1		Pickens	n.a.	0	Geneva 2	5.03
Crenshaw	n.a.	0		Pike	n.a.	0	Greenville	4.76
Cullman	6.64	3		Randolph	5.95	1	Haleyville	4.35
Dale	n.a.	0		Russell	6.50	2	Hamilton 3S	4.01
Dallas	7.14	1		St. Clair	2.95	6	Heflin	3.55
DeKalb	4.53	7		Shelby	3.06	16	Hurtsboro	3.37
Elmore	5.03	5		Sumter	n.a.	0	Jasper	3.33
Escambia	10.46	2		Talladega	1.74	2	Lafayette	4.20
Etowah	2.99	2		Tallapoosa	4.47	1	Livingston	4.51
Fayette	5.04	1		Tuscaloosa	6.46	5	Melvin	6.86
Franklin	n.a.	0		Walker	6.13	2	Milstead	4.12
Geneva	n.a.	0		Washington	11.55	1	Moulton	3.66
Greene	n.a.	0		Wilcox	10.22	2	Oneonta	3.31
Hale	n.a.	0		Winston	3.51	3	Perryville	3.56
Henry	n.a.	0					Plantersville	4.45
							Rock Mills	3.85
							Rockford	4.90
							Sylacauga	3.79
							Union Springs	4.48
							Uniontown	4.59
							Vernon	2.78
							Warrior L&D	4.02
							Wetumpka	4.30

Alabama State Climatologist

John R. Christy

Alabama State Climatologist

The University of Alabama

in Huntsville

christy@nsstc.uah.edu

256-961-7763

Assistant State Climatologist

Robert Junod

The University of Alabama in Huntsville

rjunod@nsstc.uah.edu

256-961-7743

Associate State Climatologist

Lee Ellenburg

The University of Alabama in Huntsville

wle00001@uah.edu

256-961-7498

For questions, please contact:

alabama.climate@nsstc.uah.edu

<http://nsstc.uah.edu/alclimatereport>